

CENPA Antibody

Catalog No: #34199

Package Size: #34199-1 50ul #34199-2 100ul

Orders: order@signalwayantibody.comSupport: tech@signalwayantibody.com

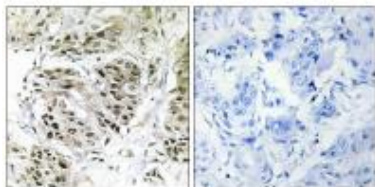
Description

| | |
|-----------------------|--|
| Product Name | CENPA Antibody |
| Host Species | Rabbit |
| Clonality | Polyclonal |
| Purification | The antibody was affinity-purified from rabbit antiserum by affinity-chromatography using epitope-specific immunogen. |
| Applications | IHC |
| Species Reactivity | Hu |
| Specificity | The antibody detects endogenous levels of total CENPA protein. |
| Immunogen Type | Peptide |
| Immunogen Description | Synthesized peptide derived from internal of human CENPA. |
| Target Name | CENPA |
| Other Names | CENA; CENP-A; Centromere autoantigen A; Centromere protein A; |
| Accession No. | Swiss-Prot: P49450NCBI Gene ID: 1058 |
| SDS-PAGE MW | 16kd |
| Concentration | 1.0mg/ml |
| Formulation | Rabbit IgG in phosphate buffered saline (without Mg ²⁺ and Ca ²⁺), pH 7.4, 150mM NaCl, 0.02% sodium azide and 50% glycerol. |
| Storage | Store at -20°C |

Application Details

Immunohistochemistry: 1:50~1:100

Images



Immunohistochemistry analysis of paraffin-embedded human breast carcinoma tissue using CENPA antibody #34199.

Background

Histone H3-like variant which exclusively replaces conventional H3 in the nucleosome core of centromeric chromatin at the inner plate of the

kinetochore. Required for recruitment and assembly of kinetochore proteins, mitotic progression and chromosome segregation. May serve as an epigenetic mark that propagates centromere identity through replication and cell division. The CENPA-H4 heterotetramer can bind DNA by itself (in vitro).

Sullivan K.F., J. Cell Biol. 127:581-592(1994).

Hillier L.W., Nature 434:724-731(2005).

Shelby R.D., J. Cell Biol. 136:501-513(1997).

Note: This product is for in vitro research use only and is not intended for use in humans or animals.