

CDON Antibody

Catalog No: #34196

Package Size: #34196-1 50ul #34196-2 100ul

Orders: order@signalwayantibody.comSupport: tech@signalwayantibody.com

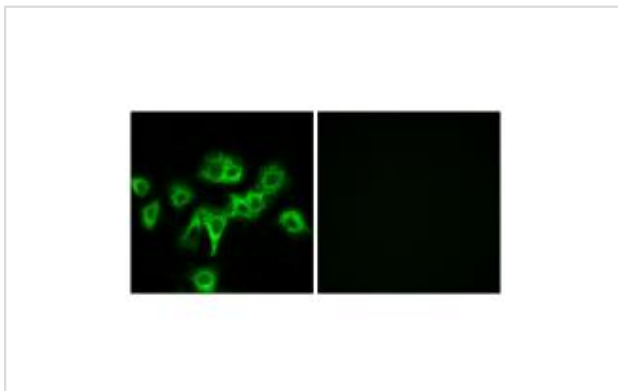
Description

Product Name	CDON Antibody
Host Species	Rabbit
Clonality	Polyclonal
Purification	The antibody was affinity-purified from rabbit antiserum by affinity-chromatography using epitope-specific immunogen.
Applications	IF
Species Reactivity	Hu
Specificity	The antibody detects endogenous levels of total CDON protein.
Immunogen Type	Peptide
Immunogen Description	Synthesized peptide derived from internal of human CDON.
Target Name	CDON
Other Names	Cell adhesion molecule-related/down-regulated by oncogenes ; CDON; CDO;
Accession No.	Swiss-Prot: Q4KMG0NCBI Gene ID: 50937
SDS-PAGE MW	140kd
Concentration	1.0mg/ml
Formulation	Rabbit IgG in phosphate buffered saline (without Mg ²⁺ and Ca ²⁺), pH 7.4, 150mM NaCl, 0.02% sodium azide and 50% glycerol.
Storage	Store at -20°C

Application Details

Immunofluorescence: 1:100~1:500

Images



Immunofluorescence analysis of MCF-7 cells, using CDON antibody #34196.

Background

Component of a cell-surface receptor complex that mediates cell-cell interactions between muscle precursor cells. Promotes differentiation of

myogenic cells By similarity.

Kang J.-S., J. Cell Biol. 138:203-213(1997).

The MGC Project Team, Genome Res. 14:2121-2127(2004).

Note: This product is for in vitro research use only and is not intended for use in humans or animals.