

14-3-3 γ Antibody

Catalog No: #34147



Package Size: #34147-1 50ul #34147-2 100ul

Orders: order@signalwayantibody.com

Support: tech@signalwayantibody.com

Description

Product Name	14-3-3 γ Antibody
Host Species	Rabbit
Clonality	Polyclonal
Purification	The antibody was affinity-purified from rabbit antiserum by affinity-chromatography using epitope-specific immunogen.
Applications	WB IHC IF
Species Reactivity	Hu Ms Rt
Specificity	The antibody detects endogenous levels of total 14-3-3 γ protein.
Immunogen Type	Peptide
Immunogen Description	Synthesized peptide derived from internal of human 14-3-3 γ .
Target Name	14-3-3 γ
Other Names	1433G; 143G; KCIP-1; Protein kinase C inhibitor protein-1; YWHAG
Accession No.	Swiss-Prot: P61981NCBI Gene ID: 7532
SDS-PAGE MW	28kd
Concentration	1.0mg/ml
Formulation	Rabbit IgG in phosphate buffered saline (without Mg ²⁺ and Ca ²⁺), pH 7.4, 150mM NaCl, 0.02% sodium azide and 50% glycerol.
Storage	Store at -20°C

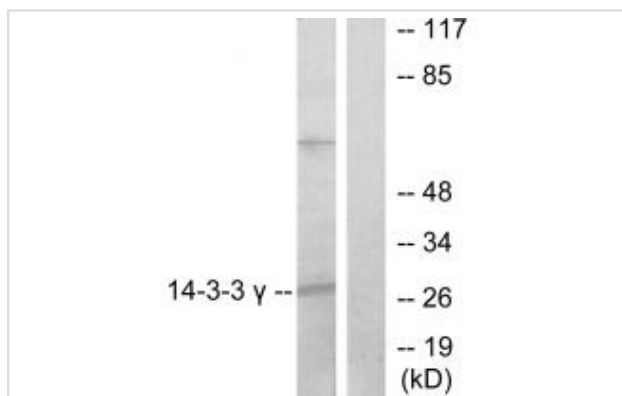
Application Details

Western blotting: 1:500~1:3000

Immunohistochemistry: 1:50~1:100

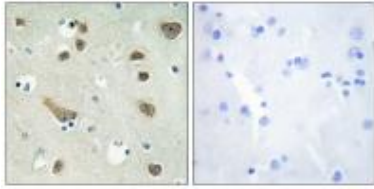
Immunofluorescence: 1:100~1:500

Images

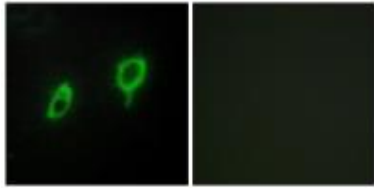


Western blot analysis of extracts from K562 cells, treated with insulin (0.01U/ml, 15mins), using 14-3-3 γ antibody #34147.

Immunohistochemistry analysis of paraffin-embedded human brain tissue using 14-3-3 γ antibody #34147.



Immunofluorescence analysis of COS7 cells, using 14-3-3 γ antibody #34147.



Background

Adapter protein implicated in the regulation of a large spectrum of both general and specialized signaling pathways. Binds to a large number of partners, usually by recognition of a phosphoserine or phosphothreonine motif. Binding generally results in the modulation of the activity of the binding partner.

Autieri M.V., DNA Cell Biol. 18:555-564(1999).

Horie M., Genomics 60:241-243(1999).

Hillier L.W., Nature 424:157-164(2003).

Note: This product is for in vitro research use only and is not intended for use in humans or animals.