

14-3-3 ϵ Antibody

Catalog No: #34145

Package Size: #34145-1 50ul #34145-2 100ul

Orders: order@signalwayantibody.comSupport: tech@signalwayantibody.com

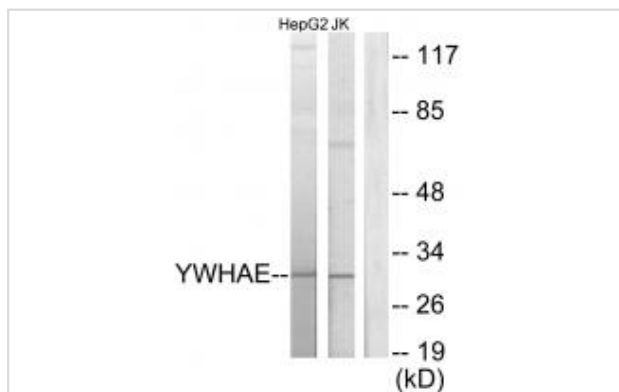
Description

Product Name	14-3-3 ϵ Antibody
Host Species	Rabbit
Clonality	Polyclonal
Purification	The antibody was affinity-purified from rabbit antiserum by affinity-chromatography using epitope-specific immunogen.
Applications	WB
Species Reactivity	Hu Ms Rt
Specificity	The antibody detects endogenous levels of total 14-3-3 ϵ protein.
Immunogen Type	Peptide
Immunogen Description	Synthesized peptide derived from C-terminal of human 14-3-3 ϵ .
Target Name	14-3-3 ϵ
Other Names	14-3-3E; 143E; KCIP-1; Mitochondrial import stimulation factor L subunit; Protein kinase C inhibitor protein-1
Accession No.	Swiss-Prot: P62258NCBI Gene ID: 7531
SDS-PAGE MW	29kd
Concentration	1.0mg/ml
Formulation	Rabbit IgG in phosphate buffered saline (without Mg ²⁺ and Ca ²⁺), pH 7.4, 150mM NaCl, 0.02% sodium azide and 50% glycerol.
Storage	Store at -20°C

Application Details

Western blotting: 1:500~1:3000

Images



Western blot analysis of extracts from HepG2 cells and Jurkat cells, using 14-3-3 ϵ antibody #34145.

Background

Adapter protein implicated in the regulation of a large spectrum of both general and specialized signaling pathways. Binds to a large number of

partners, usually by recognition of a phosphoserine or phosphothreonine motif. Binding generally results in the modulation of the activity of the binding partner.

Conklin D.S., Proc. Natl. Acad. Sci. U.S.A. 92:7892-7896(1995).

Jin D.-Y., Nature 382:308-308(1996).

Chong S.S., J. Biol. Chem. 271:735-741(1996).

Note: This product is for in vitro research use only and is not intended for use in humans or animals.