

## MRCKB Antibody

Catalog No: #34138



Package Size: #34138-1 50ul #34138-2 100ul

Orders: [order@signalwayantibody.com](mailto:order@signalwayantibody.com)Support: [tech@signalwayantibody.com](mailto:tech@signalwayantibody.com)

## Description

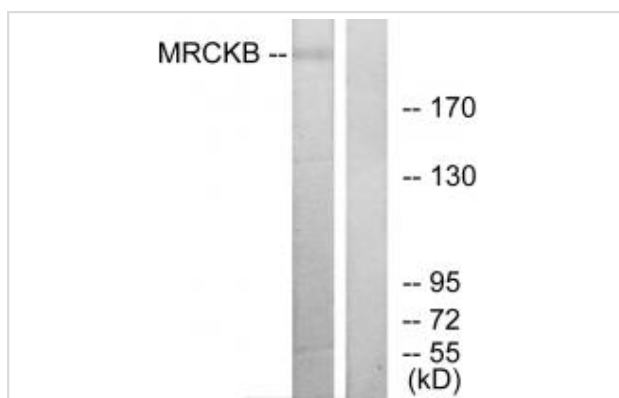
Product Name	MRCKB Antibody
Host Species	Rabbit
Clonality	Polyclonal
Purification	The antibody was affinity-purified from rabbit antiserum by affinity-chromatography using epitope-specific immunogen.
Applications	WB IHC
Species Reactivity	Hu Ms Rt
Specificity	The antibody detects endogenous levels of total MRCKB protein.
Immunogen Type	Peptide
Immunogen Description	Synthesized peptide derived from internal of human MRCKB.
Target Name	MRCKB
Other Names	CDC42-binding protein kinase beta; CDC42BPB; EC 2.7.11.1; MRCK-beta;
Accession No.	Swiss-Prot: Q9Y5S2NCBI Gene ID: 9578
SDS-PAGE MW	194kd
Concentration	1.0mg/ml
Formulation	Rabbit IgG in phosphate buffered saline (without Mg <sup>2+</sup> and Ca <sup>2+</sup> ), pH 7.4, 150mM NaCl, 0.02% sodium azide and 50% glycerol.
Storage	Store at -20°C

## Application Details

Western blotting: 1:500~1:3000

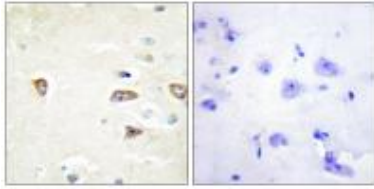
Immunohistochemistry: 1:50~1:100

## Images



Western blot analysis of extracts from COLO cells, using MRCKB antibody #34138.

Immunohistochemistry analysis of paraffin-embedded human brain tissue using MRCKB antibody #34138.



## Background

Serine/threonine-protein kinase which is an important downstream effector of CDC42 and plays a role in the regulation of cytoskeleton reorganization and cell migration. Regulates actin cytoskeletal reorganization via phosphorylation of PPP1R12C and MYL9/MLC2. In concert with MYO18A and LURAP1, is involved in modulating lamellar actomyosin retrograde flow that is crucial to cell protrusion and migration. Phosphorylates PPP1R12A.

Nakajima D., DNA Res. 9:99-106(2002).

Olsen J.V., Cell 127:635-648(2006).

Hirosawa M., DNA Res. 6:329-336(1999).

Note: This product is for in vitro research use only and is not intended for use in humans or animals.