

MOK Antibody

Catalog No: #34123

Package Size: #34123-1 50ul #34123-2 100ul

Orders: order@signalwayantibody.com

Support: tech@signalwayantibody.com

Description

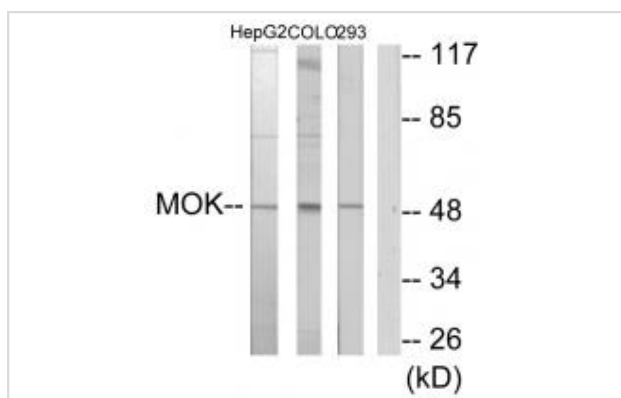
Product Name	MOK Antibody
Host Species	Rabbit
Clonality	Polyclonal
Purification	The antibody was affinity-purified from rabbit antiserum by affinity-chromatography using epitope-specific immunogen.
Applications	WB IHC
Species Reactivity	Hu
Specificity	The antibody detects endogenous levels of total MOK protein.
Immunogen Type	Peptide
Immunogen Description	Synthesized peptide derived from internal of human MOK.
Target Name	MOK
Other Names	EC 2.7.11.22; MOK protein kinase; RAGE; RAGE-1; RAGE1
Accession No.	Swiss-Prot: Q9UQ07NCBI Gene ID: 5891
SDS-PAGE MW	48kd
Concentration	1.0mg/ml
Formulation	Rabbit IgG in phosphate buffered saline (without Mg ²⁺ and Ca ²⁺), pH 7.4, 150mM NaCl, 0.02% sodium azide and 50% glycerol.
Storage	Store at -20°C

Application Details

Western blotting: 1:500~1:3000

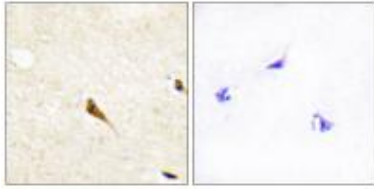
Immunohistochemistry: 1:50~1:100

Images



Western blot analysis of extracts from HepG2 cells, COLO205 cells and 293 cells, using MOK antibody #34123.

Immunohistochemistry analysis of paraffin-embedded human brain tissue using MOK antibody #34123.



Background

Able to phosphorylate several exogenous substrates and to undergo autophosphorylation By similarity.

Miyata Y., Genes Cells 4:299-309(1999).

Gaugler B., Immunogenetics 44:323-330(1996).

The MGC Project Team; Genome Res. 14:2121-2127(2004).

Note: This product is for in vitro research use only and is not intended for use in humans or animals.