

ICK Antibody

Catalog No: #34122

Package Size: #34122-1 50ul #34122-2 100ul

Orders: order@signalwayantibody.comSupport: tech@signalwayantibody.com

Description

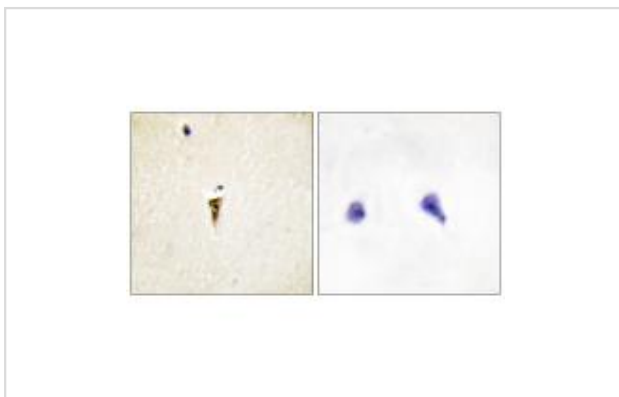
Product Name	ICK Antibody
Host Species	Rabbit
Clonality	Polyclonal
Purification	The antibody was affinity-purified from rabbit antiserum by affinity-chromatography using epitope-specific immunogen.
Applications	IHC IF
Species Reactivity	Hu Ms
Specificity	The antibody detects endogenous levels of total ICK protein.
Immunogen Type	Peptide
Immunogen Description	Synthesized peptide derived from internal of human ICK.
Target Name	ICK
Other Names	EC 2.7.11.22; ICK; Intestinal cell kinase; KIAA0936; LCK2
Accession No.	Swiss-Prot: Q9UPZ9NCBI Gene ID: 22858
SDS-PAGE MW	71kd
Concentration	1.0mg/ml
Formulation	Rabbit IgG in phosphate buffered saline (without Mg ²⁺ and Ca ²⁺), pH 7.4, 150mM NaCl, 0.02% sodium azide and 50% glycerol.
Storage	Store at -20°C

Application Details

Immunohistochemistry: 1:50~1:100

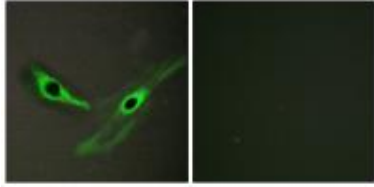
Immunofluorescence: 1:100~1:500

Images



Immunohistochemistry analysis of paraffin-embedded human brain tissue, using ICK antibody #34122.

Immunofluorescence analysis of HeLa cells, using ICK antibody #34122.



Background

May play a key role in the development of multiple organ systems and particularly in cardiac development By similarity.

Togawa K., J. Cell. Physiol. 183:129-139(2000).

Mungall A.J., Nature 425:805-811(2003).

Nagase T., DNA Res. 6:63-70(1999).

Note: This product is for in vitro research use only and is not intended for use in humans or animals.