

CARKL Antibody

Catalog No: #34105

Package Size: #34105-1 50ul #34105-2 100ul

Orders: order@signalwayantibody.comSupport: tech@signalwayantibody.com

Description

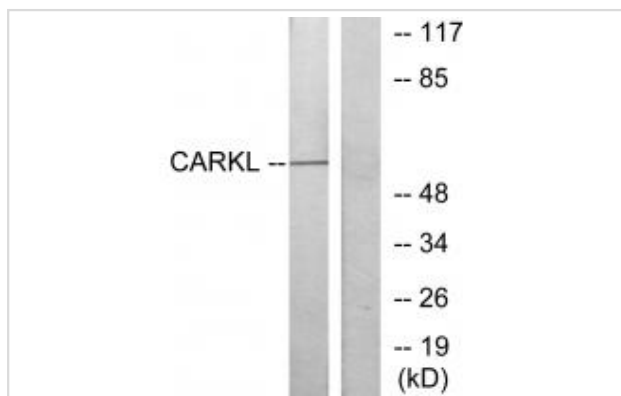
Product Name	CARKL Antibody
Host Species	Rabbit
Clonality	Polyclonal
Purification	The antibody was affinity-purified from rabbit antiserum by affinity-chromatography using epitope-specific immunogen.
Applications	WB IHC
Species Reactivity	Hu Ms Rt
Specificity	The antibody detects endogenous levels of total CARKL protein.
Immunogen Type	Peptide
Immunogen Description	Synthesized peptide derived from N-terminal of human CARKL.
Target Name	CARKL
Other Names	Carbohydrate kinase-like protein; EC 2.7.1.-; CARKL;
Accession No.	Swiss-Prot: Q9UHH6NCBI Gene ID: 23729
SDS-PAGE MW	55kd
Concentration	1.0mg/ml
Formulation	Rabbit IgG in phosphate buffered saline (without Mg ²⁺ and Ca ²⁺), pH 7.4, 150mM NaCl, 0.02% sodium azide and 50% glycerol.
Storage	Store at -20°C

Application Details

Western blotting: 1:500~1:3000

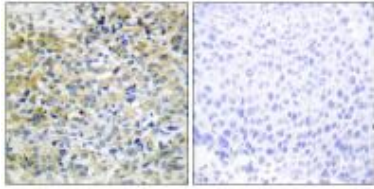
Immunohistochemistry: 1:50~1:100

Images



Western blot analysis of extracts from Jurkat cells, using CARKL antibody #34105.

Immunohistochemistry analysis of paraffin-embedded human liver carcinoma tissue using CARKL antibody #34105.



Background

Acts as a modulator of macrophage activation through control of glucose metabolism By similarity.

Touchman J.W., Genome Res. 10:165-173(2000).

Note: This product is for in vitro research use only and is not intended for use in humans or animals.