

MLTK Antibody

Catalog No: #34083

Package Size: #34083-1 50ul #34083-2 100ul

Orders: order@signalwayantibody.comSupport: tech@signalwayantibody.com

Description

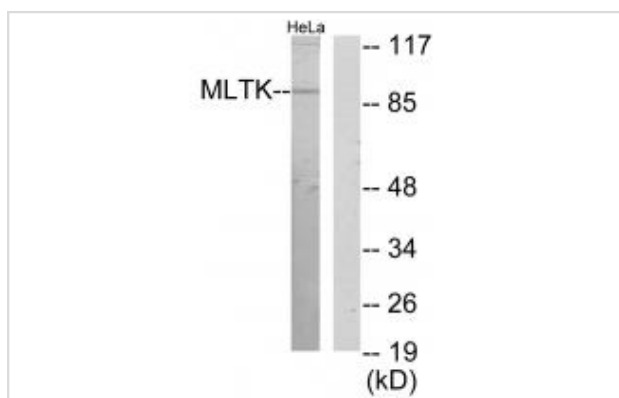
Product Name	MLTK Antibody
Host Species	Rabbit
Clonality	Polyclonal
Purification	The antibody was affinity-purified from rabbit antiserum by affinity-chromatography using epitope-specific immunogen.
Applications	WB IF
Species Reactivity	Hu Ms
Specificity	The antibody detects endogenous levels of total MLTK protein.
Immunogen Type	Peptide
Immunogen Description	Synthesized peptide derived from C-terminal of human MLTK.
Target Name	MLTK
Other Names	AZK; EC 2.7.11.25; MLTK; MRK-beta; mixed lineage kinase-related kinase
Accession No.	Swiss-Prot: Q9NYL2NCBI Gene ID: 51776
SDS-PAGE MW	91kd
Concentration	1.0mg/ml
Formulation	Rabbit IgG in phosphate buffered saline (without Mg ²⁺ and Ca ²⁺), pH 7.4, 150mM NaCl, 0.02% sodium azide and 50% glycerol.
Storage	Store at -20°C

Application Details

Western blotting: 1:500~1:3000

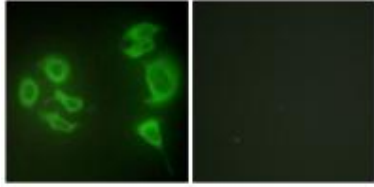
Immunofluorescence: 1:100~1:500

Images



Western blot analysis of extracts from HeLa cells, using MLTK antibody #34083.

Immunofluorescence analysis of HepG2 cells, using MLTK antibody #34083.



Background

Stress-activated component of a protein kinase signal transduction cascade. Regulates the JNK and p38 pathways. Pro-apoptotic. Role in regulation of S and G2 cell cycle checkpoint by direct phosphorylation of CHEK2. Isoform 1, but not isoform 2, causes cell shrinkage and disruption of actin stress fibers. Isoform 1 may have role in neoplastic cell transformation and cancer development. Isoform 1, but not isoform 2, phosphorylates histone H3 at 'Ser-28'.

Gotoh I., J. Biol. Chem. 276:4276-4286(2001).

Bloem L.J., J. Mol. Cell. Cardiol. 33:1739-1750(2001).

Gross E.A., J. Biol. Chem. 277:13873-13882(2002).

Note: This product is for in vitro research use only and is not intended for use in humans or animals.