

CREBZF Antibody

Catalog No: #34077



Package Size: #34077-1 50ul #34077-2 100ul

Orders: order@signalwayantibody.com

Support: tech@signalwayantibody.com

Description

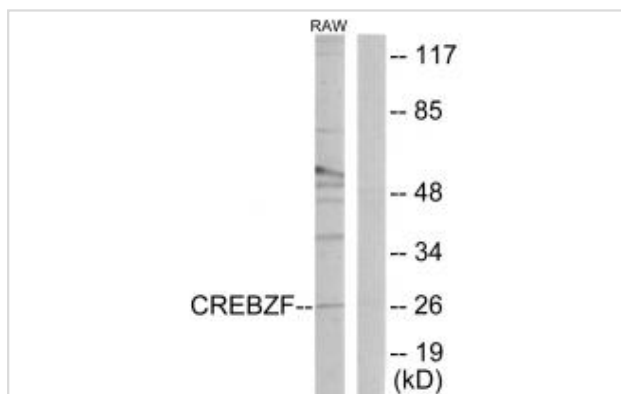
Product Name	CREBZF Antibody
Host Species	Rabbit
Clonality	Polyclonal
Purification	The antibody was affinity-purified from rabbit antiserum by affinity-chromatography using epitope-specific immunogen.
Applications	WB IF
Species Reactivity	Hu Ms
Specificity	The antibody detects endogenous levels of total CREBZF protein.
Immunogen Type	Peptide
Immunogen Description	Synthesized peptide derived from internal of human CREBZF.
Target Name	CREBZF
Other Names	CREB/ATF bZIP transcription factor; Host cell factor-binding transcription factor Zhangfei; HCF-binding transcription factor Zhangfei; CREBZF; ZF
Accession No.	Swiss-Prot: Q9NS37NCBI Gene ID: 58487
SDS-PAGE MW	26kd
Concentration	1.0mg/ml
Formulation	Rabbit IgG in phosphate buffered saline (without Mg ²⁺ and Ca ²⁺), pH 7.4, 150mM NaCl, 0.02% sodium azide and 50% glycerol.
Storage	Store at -20°C

Application Details

Western blotting: 1:500~1:3000

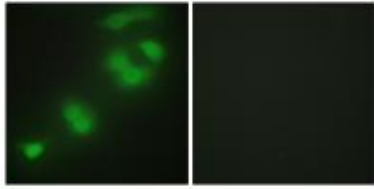
Immunofluorescence: 1:100~1:500

Images



Western blot analysis of extracts from RAW264.7 cells, using CREBZF antibody #34077.

Immunofluorescence analysis of HepG2 cells, using CREBZF antibody #34077.



Background

Strongly activates transcription when bound to HCFC1. Suppresses the expression of HSV proteins in cells infected with the virus in a HCFC1-dependent manner. Also suppresses the HCFC1-dependent transcriptional activation by CREB3 and reduces the amount of CREB3 in the cell. Able to down-regulate expression of some cellular genes in CREBZF-expressing cells.

Lu R., *Nucleic Acids Res.* 28:2446-2454(2000).

The MGC Project Team, *Genome Res.* 14:2121-2127(2004).

Misra V., *J. Biol. Chem.* 280:15257-15266(2005).

Note: This product is for in vitro research use only and is not intended for use in humans or animals.