

IPPK Antibody

Catalog No: #34067

Package Size: #34067-1 50ul #34067-2 100ul

Orders: order@signalwayantibody.com

Support: tech@signalwayantibody.com

Description

Product Name	IPPK Antibody
Host Species	Rabbit
Clonality	Polyclonal
Purification	The antibody was affinity-purified from rabbit antiserum by affinity-chromatography using epitope-specific immunogen.
Applications	WB IHC IF
Species Reactivity	Hu Ms
Specificity	The antibody detects endogenous levels of total IPPK protein.
Immunogen Type	Peptide
Immunogen Description	Synthesized peptide derived from internal of human IPPK.
Target Name	IPPK
Other Names	EC 2.7.1.158; Inositol-1; 3; 4; 5
Accession No.	Swiss-Prot: Q9H8X2NCBI Gene ID: 64768
SDS-PAGE MW	56kd
Concentration	1.0mg/ml
Formulation	Rabbit IgG in phosphate buffered saline (without Mg ²⁺ and Ca ²⁺), pH 7.4, 150mM NaCl, 0.02% sodium azide and 50% glycerol.
Storage	Store at -20°C

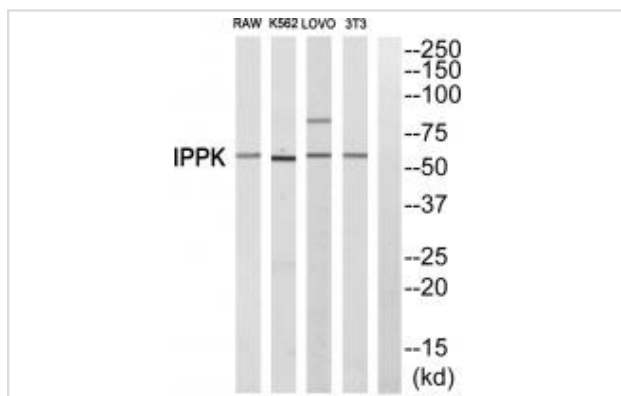
Application Details

Western blotting: 1:500~1:3000

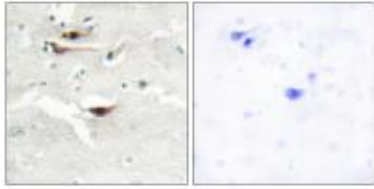
Immunohistochemistry: 1:50~1:100

Immunofluorescence: 1:100~1:500

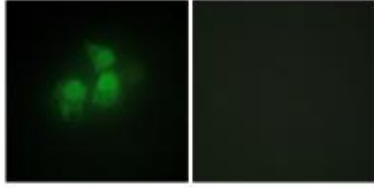
Images



Western blot analysis of extracts from RAW cells, K562 cells, LOVO cells and 3T3 cells, using IPPK antibody #34067.



Immunohistochemistry analysis of paraffin-embedded human brain tissue, using IPPK antibody #34067.



Immunofluorescence analysis of HepG2 cells, using IPPK antibody #34067.

Background

Phosphorylates Ins(1,3,4,5,6)P5 at position 2 to form Ins(1,2,3,4,5,6)P6 (InsP6 or phytate). InsP6 is involved in many processes such as mRNA export, non-homologous end-joining, endocytosis, ion channel regulation. It also protects cells from TNF-alpha-induced apoptosis.

Verbsky J.W., J. Biol. Chem. 277:31857-31862(2002).

Hulme D.J., Submitted (FEB-2001) to the EMBL/GenBank/DDBJ databases.

Ota T., Nat. Genet. 36:40-45(2004).

Note: This product is for in vitro research use only and is not intended for use in humans or animals.