

## IPKB Antibody

Catalog No: #34054

Package Size: #34054-1 50ul #34054-2 100ul

Orders: [order@signalwayantibody.com](mailto:order@signalwayantibody.com)Support: [tech@signalwayantibody.com](mailto:tech@signalwayantibody.com)

## Description

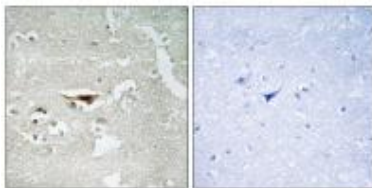
Product Name	IPKB Antibody
Host Species	Rabbit
Clonality	Polyclonal
Purification	The antibody was affinity-purified from rabbit antiserum by affinity-chromatography using epitope-specific immunogen.
Applications	IHC IF
Species Reactivity	Hu
Specificity	The antibody detects endogenous levels of total IPKB protein.
Immunogen Type	Peptide
Immunogen Description	Synthesized peptide derived from internal of human IPKB.
Target Name	IPKB
Other Names	PKI-beta; cAMP-dependent protein kinase inhibitor beta; PKIB; PRKACN2;
Accession No.	Swiss-Prot: Q9C010NCBI Gene ID: 5570
SDS-PAGE MW	8kd
Concentration	1.0mg/ml
Formulation	Rabbit IgG in phosphate buffered saline (without Mg <sup>2+</sup> and Ca <sup>2+</sup> ), pH 7.4, 150mM NaCl, 0.02% sodium azide and 50% glycerol.
Storage	Store at -20°C

## Application Details

Immunohistochemistry: 1:50~1:100

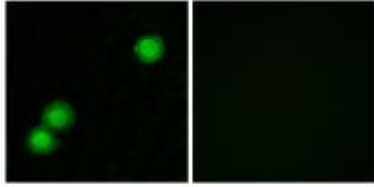
Immunofluorescence: 1:100~1:500

## Images



Immunohistochemistry analysis of paraffin-embedded human brain tissue, using IPKB antibody #34054.

Immunofluorescence analysis of MCF-7 cells, using IPKB antibody #34054.



## Background

Extremely potent competitive inhibitor of cAMP-dependent protein kinase activity, this protein interacts with the catalytic subunit of the enzyme after the cAMP-induced dissociation of its regulatory chains By similarity.

Zheng L., *Biochem. J.* 349:403-407(2000).

Mungall A.J., *Nature* 425:805-811(2003).

The MGC Project Team, *Genome Res.* 14:2121-2127(2004).

Note: This product is for in vitro research use only and is not intended for use in humans or animals.