

## DGKH Antibody

Catalog No: #33954

Package Size: #33954-1 50ul #33954-2 100ul

Orders: [order@signalwayantibody.com](mailto:order@signalwayantibody.com)Support: [tech@signalwayantibody.com](mailto:tech@signalwayantibody.com)

## Description

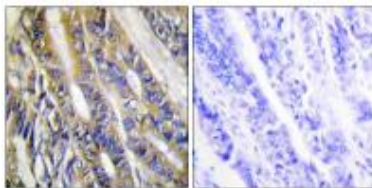
Product Name	DGKH Antibody
Host Species	Rabbit
Clonality	Polyclonal
Purification	The antibody was affinity-purified from rabbit antiserum by affinity-chromatography using epitope-specific immunogen.
Applications	IHC IF
Species Reactivity	Hu
Specificity	The antibody detects endogenous levels of total DGKH protein
Immunogen Type	Peptide
Immunogen Description	Synthesized peptide derived from internal of human DGKH.
Target Name	DGKH
Other Names	acylglycerol kinase eta; EC 2.7.1.107; Diglyceride kinase eta; DGK-eta; DAG kinase eta
Accession No.	Swiss-Prot: Q86XP1NCBI Gene ID: 160851
SDS-PAGE MW	135kd
Concentration	1.0mg/ml
Formulation	Rabbit IgG in phosphate buffered saline (without Mg <sup>2+</sup> and Ca <sup>2+</sup> ), pH 7.4, 150mM NaCl, 0.02% sodium azide and 50% glycerol.
Storage	Store at -20°C

## Application Details

Immunohistochemistry: 1:50~1:100

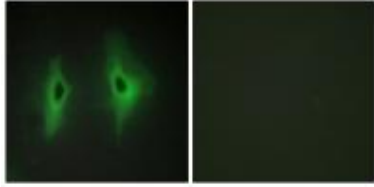
Immunofluorescence: 1:100~1:500

## Images



Immunohistochemistry analysis of paraffin-embedded human colon carcinoma tissue, using DGKH antibody #33954.

Immunofluorescence analysis of HeLa cells, using DGKH antibody #33954.



## Background

Phosphorylates diacylglycerol (DAG) to generate phosphatidic acid (PA). Plays a key role in promoting cell growth. Activates the Ras/B-Raf/C-Raf/MEK/ERK signaling pathway induced by EGF. Regulates the recruitment of RAF1 and BRAF from cytoplasm to membranes and their heterodimerization.

Murakami T., J. Biol. Chem. 278:34364-34372(2003) .

Dunham A., Nature 428:522-528(2004).

Ota T., Nat. Genet. 36:40-45(2004).

Note: This product is for in vitro research use only and is not intended for use in humans or animals.