

## STRAD Antibody

Catalog No: #33947



Package Size: #33947-1 50ul #33947-2 100ul

Orders: [order@signalwayantibody.com](mailto:order@signalwayantibody.com)Support: [tech@signalwayantibody.com](mailto:tech@signalwayantibody.com)

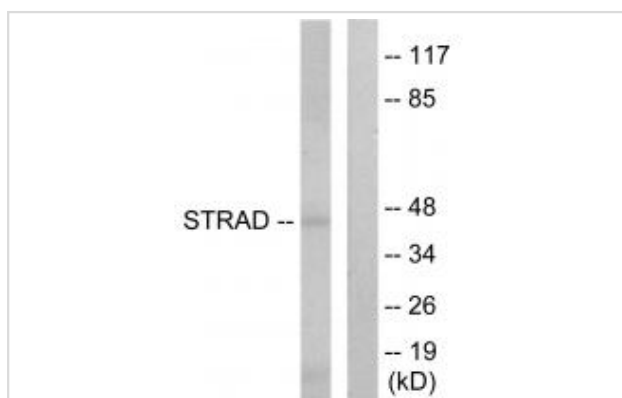
## Description

Product Name	STRAD Antibody
Host Species	Rabbit
Clonality	Polyclonal
Purification	The antibody was affinity-purified from rabbit antiserum by affinity-chromatography using epitope-specific immunogen.
Applications	WB
Species Reactivity	Hu Ms
Specificity	The antibody detects endogenous levels of total STRAD protein.
Immunogen Type	Peptide
Immunogen Description	Synthesized peptide derived from internal of human STRAD.
Target Name	STRAD
Other Names	STE20-related adapter protein; STRAD alpha; Serologically defined breast cancer antigen NY-BR-96; STRAD; LYK5
Accession No.	Swiss-Prot: Q7RTN6NCBI Gene ID: 92335
SDS-PAGE MW	46kd
Concentration	1.0mg/ml
Formulation	Rabbit IgG in phosphate buffered saline (without Mg <sup>2+</sup> and Ca <sup>2+</sup> ), pH 7.4, 150mM NaCl, 0.02% sodium azide and 50% glycerol.
Storage	Store at -20°C

## Application Details

Western blotting: 1:500~1:3000

## Images



Western blot analysis of extracts from HepG2 cells, using STRAD antibody #33947.

## Background

---

Pseudokinase which, in complex with CAB39/MO25 (CAB39/MO25alpha or CAB39L/MO25beta), binds to and activates STK11/LKB1. Adopts a closed conformation typical of active protein kinases and binds STK11/LKB1 as a pseudosubstrate, promoting conformational change of STK11/LKB1 in an active conformation.

Scanlan M.J., Cancer Immun. 1:4-4(2001).

Ota T., Nat. Genet. 36:40-45(2004).

Baas A.F., EMBO J. 22:3062-3072(2003).

---

Note: This product is for in vitro research use only and is not intended for use in humans or animals.