

## LDOCL Antibody

Catalog No: #33934



Package Size: #33934-1 50ul #33934-2 100ul

Orders: [order@signalwayantibody.com](mailto:order@signalwayantibody.com)Support: [tech@signalwayantibody.com](mailto:tech@signalwayantibody.com)

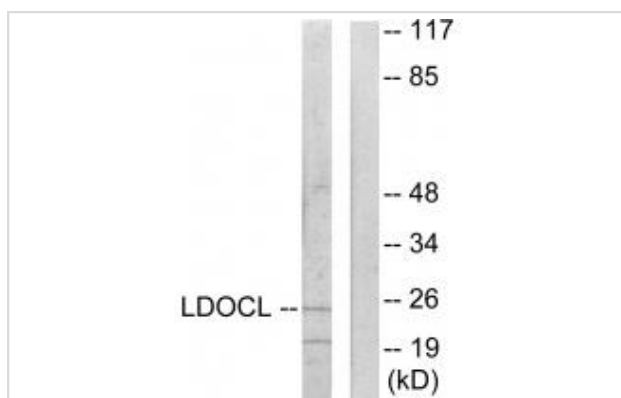
## Description

Product Name	LDOCL Antibody
Host Species	Rabbit
Clonality	Polyclonal
Purification	The antibody was affinity-purified from rabbit antiserum by affinity-chromatography using epitope-specific immunogen.
Applications	WB
Species Reactivity	Hu Ms
Specificity	The antibody detects endogenous levels of total LDOCL protein.
Immunogen Type	Peptide
Immunogen Description	Synthesized peptide derived from internal of human LDOCL.
Target Name	LDOCL
Other Names	Protein LDOC1L; Leucine zipper protein down-regulated in cancer cells-like; Mammalian retrotransposon-derived protein 6; LDOC1L; MAR6
Accession No.	Swiss-Prot: Q6ICC9NCBI Gene ID: 84247
SDS-PAGE MW	24kd
Concentration	1.0mg/ml
Formulation	Rabbit IgG in phosphate buffered saline (without Mg <sup>2+</sup> and Ca <sup>2+</sup> ), pH 7.4, 150mM NaCl, 0.02% sodium azide and 50% glycerol.
Storage	Store at -20°C

## Application Details

Western blotting: 1:500~1:3000

## Images



Western blot analysis of extracts from COLO205 cells, using LDOCL antibody #33934.

## Background

---

May have an important role in the development and/or progression of some cancers.

Collins J.E., Genome Biol. 5:RESEARCH84.1-RESEARCH84.11(2004).

Dunham I., Nature 402:489-495(1999).

Ota T., Nat. Genet. 36:40-45(2004).

---

Note: This product is for in vitro research use only and is not intended for use in humans or animals.