

QORX Antibody

Catalog No: #33923

Package Size: #33923-1 50ul #33923-2 100ul

Orders: order@signalwayantibody.comSupport: tech@signalwayantibody.com

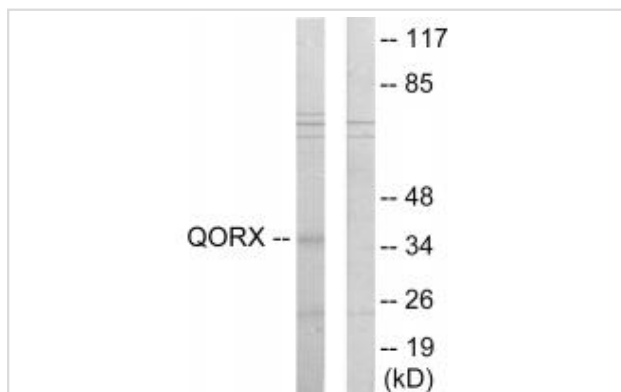
Description

| | |
|-----------------------|--|
| Product Name | QORX Antibody |
| Host Species | Rabbit |
| Clonality | Polyclonal |
| Purification | The antibody was affinity-purified from rabbit antiserum by affinity-chromatography using epitope-specific immunogen. |
| Applications | WB |
| Species Reactivity | Hu |
| Specificity | The antibody detects endogenous levels of total QORX protein. |
| Immunogen Type | Peptide |
| Immunogen Description | Synthesized peptide derived from internal of human QORX. |
| Target Name | QORX |
| Other Names | Shugoshin-like 1; hSgo1; Serologically defined breast cancer antigen NY-BR-85; SGO1; |
| Accession No. | Swiss-Prot: Q53FA7NCBI Gene ID: 9540 |
| SDS-PAGE MW | 36kd |
| Concentration | 1.0mg/ml |
| Formulation | Rabbit IgG in phosphate buffered saline (without Mg ²⁺ and Ca ²⁺), pH 7.4, 150mM NaCl, 0.02% sodium azide and 50% glycerol. |
| Storage | Store at -20°C |

Application Details

Western blotting: 1:500~1:3000

Images



Western blot analysis of extracts from 293 cells, using QORX antibody #33923.

Background

May be involved in the generation of reactive oxygen species (ROS). Has low NADPH-dependent beta-naphthoquinone reductase activity, with a

preference for 1,2-beta-naphthoquinone over 1,4-beta-naphthoquinone. Has low NADPH-dependent diamine reductase activity (in vitro).

McGuinness B.E., PLoS Biol. 3:433-449(2005).

Kitajima T.S., Curr. Biol. 15:353-359(2005).

Tang Z., Proc. Natl. Acad. Sci. U.S.A. 101:18012-18017(2004).

Note: This product is for in vitro research use only and is not intended for use in humans or animals.