

MtSSB Antibody

Catalog No: #33857

Package Size: #33857-1 50ul #33857-2 100ul

Orders: order@signalwayantibody.comSupport: tech@signalwayantibody.com

Description

Product Name	MtSSB Antibody
Host Species	Rabbit
Clonality	Polyclonal
Purification	The antibody was affinity-purified from rabbit antiserum by affinity-chromatography using epitope-specific immunogen.
Applications	WB IHC IF
Species Reactivity	Hu Ms Rt
Specificity	The antibody detects endogenous levels of total MtSSB protein.
Immunogen Type	Peptide
Immunogen Description	Synthesized peptide derived from internal of human MtSSB.
Target Name	MtSSB
Other Names	Mt-SSB; MtSSB; PWP1-interacting protein 17; SSB; SSBP
Accession No.	Swiss-Prot: Q04837NCBI Gene ID: 6742
SDS-PAGE MW	17kd
Concentration	1.0mg/ml
Formulation	Rabbit IgG in phosphate buffered saline (without Mg ²⁺ and Ca ²⁺), pH 7.4, 150mM NaCl, 0.02% sodium azide and 50% glycerol.
Storage	Store at -20°C

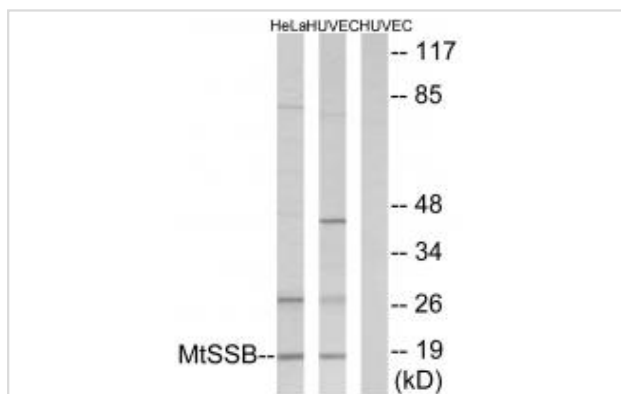
Application Details

Western blotting: 1:500~1:3000

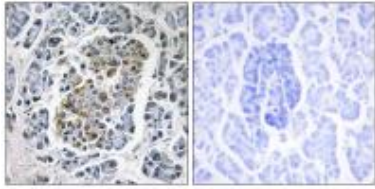
Immunohistochemistry: 1:50~1:100

Immunofluorescence: 1:100~1:500

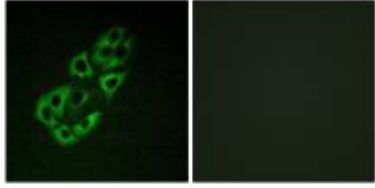
Images



Western blot analysis of extracts from HeLa cells and HUVEC cells, using MtSSB antibody #33857.



Immunohistochemistry analysis of paraffin-embedded human pancreas tissue using MtSSB antibody #33857.



Immunofluorescence analysis of A549 cells, using MtSSB antibody #33857.

Background

This protein binds preferentially and cooperatively to ss-DNA. Probably involved in mitochondrial DNA replication. Associates with mitochondrial DNA.

HAMAP-Rule MF_00984

Tiranti V., Gene 126:219-225(1993).

Matsuoka S., Science 316:1160-1166(2007).

Yang C., Nat. Struct. Biol. 4:153-157(1997).

Note: This product is for in vitro research use only and is not intended for use in humans or animals.