

## IPKA Antibody

Catalog No: #33832

Package Size: #33832-1 50ul #33832-2 100ul

Orders: [order@signalwayantibody.com](mailto:order@signalwayantibody.com)Support: [tech@signalwayantibody.com](mailto:tech@signalwayantibody.com)

## Description

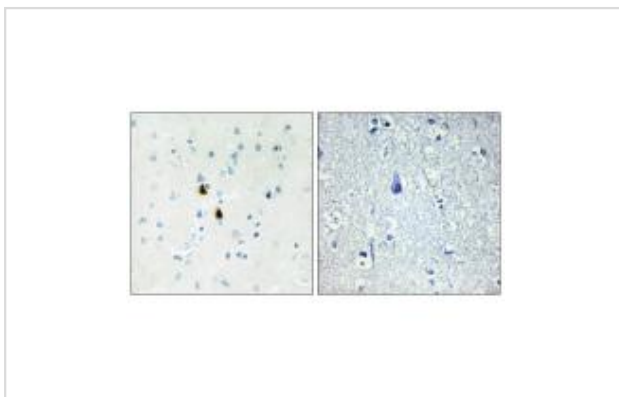
Product Name	IPKA Antibody
Host Species	Rabbit
Clonality	Polyclonal
Purification	The antibody was affinity-purified from rabbit antiserum by affinity-chromatography using epitope-specific immunogen.
Applications	IHC IF
Species Reactivity	Hu Ms
Specificity	The antibody detects endogenous levels of total IPKA protein.
Immunogen Type	Peptide
Immunogen Description	Synthesized peptide derived from internal of human IPKA.
Target Name	IPKA
Other Names	IPKA; OKRBC1; PKI-alpha; PRKACN1; cAMP-dependent protein kinase inhibitor alpha
Accession No.	Swiss-Prot: P61925NCBI Gene ID: 5569
SDS-PAGE MW	8kd
Concentration	1.0mg/ml
Formulation	Rabbit IgG in phosphate buffered saline (without Mg <sup>2+</sup> and Ca <sup>2+</sup> ), pH 7.4, 150mM NaCl, 0.02% sodium azide and 50% glycerol.
Storage	Store at -20°C

## Application Details

Immunohistochemistry: 1:50~1:100

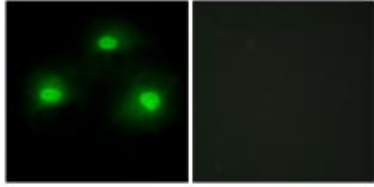
Immunofluorescence: 1:100~1:500

## Images



Immunohistochemistry analysis of paraffin-embedded human brain tissue, using TPD52 antibody #33832.

Immunofluorescence analysis of HeLa cells, using TPD52 antibody #33832.



## Background

Extremely potent competitive inhibitor of cAMP-dependent protein kinase activity, this protein interacts with the catalytic subunit of the enzyme after the cAMP-induced dissociation of its regulatory chains.

Olsen S.R., Mol. Endocrinol. 5:1246-1256(1991).

Knoell R., Submitted (FEB-2000) to the EMBL/GenBank/DDBJ databases.

The MGC Project Team, Genome Res. 14:2121-2127(2004).

Note: This product is for in vitro research use only and is not intended for use in humans or animals.