

DGKE Antibody

Catalog No: #33803

Package Size: #33803-1 50ul #33803-2 100ul

Orders: order@signalwayantibody.comSupport: tech@signalwayantibody.com

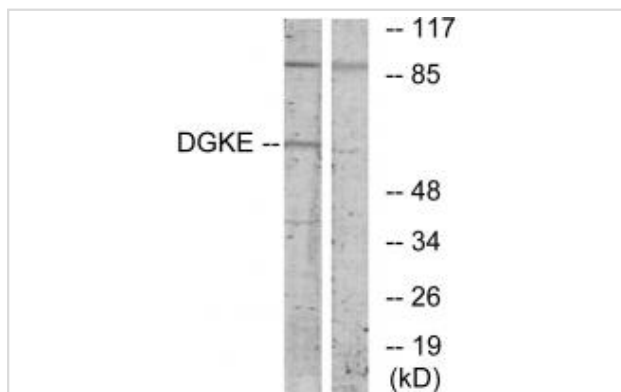
Description

Product Name	DGKE Antibody
Host Species	Rabbit
Clonality	Polyclonal
Purification	The antibody was affinity-purified from rabbit antiserum by affinity-chromatography using epitope-specific immunogen.
Applications	WB
Species Reactivity	Hu Ms Rt
Specificity	The antibody detects endogenous levels of total DGKE protein.
Immunogen Type	Peptide
Immunogen Description	Synthesized peptide derived from internal of human DGKE.
Target Name	DGKE
Other Names	Diacylglycerol kinase epsilon; EC 2.7.1.107; Diglyceride kinase epsilon; DGK-epsilon; DAG kinase epsilon
Accession No.	Swiss-Prot: P52429NCBI Gene ID: 8526
SDS-PAGE MW	60kd
Concentration	1.0mg/ml
Formulation	Rabbit IgG in phosphate buffered saline (without Mg ²⁺ and Ca ²⁺), pH 7.4, 150mM NaCl, 0.02% sodium azide and 50% glycerol.
Storage	Store at -20°C

Application Details

Western blotting: 1:500~1:3000

Images



Western blot analysis of extracts from K562 cells, using DGKE antibody #33803.

Background

Highly selective for arachidonate-containing species of diacylglycerol (DAG). May terminate signals transmitted through arachidonoyl-DAG or may

contribute to the synthesis of phospholipids with defined fatty acid composition.

Tang W., J. Biol. Chem. 271:10237-10241(1996).

Tang W., Gene 239:185-192(1999).

Sjoebloom T., Science 314:268-274(2006).

Note: This product is for in vitro research use only and is not intended for use in humans or animals.