

ERF Antibody

Catalog No: #33790

Package Size: #33790-1 50ul #33790-2 100ul

Orders: order@signalwayantibody.comSupport: tech@signalwayantibody.com

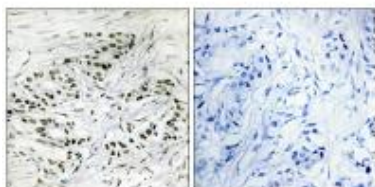
Description

Product Name	ERF Antibody
Host Species	Rabbit
Clonality	Polyclonal
Purification	The antibody was affinity-purified from rabbit antiserum by affinity-chromatography using epitope-specific immunogen.
Applications	IHC
Species Reactivity	Hu Ms
Specificity	The antibody detects endogenous levels of total ERF protein.
Immunogen Type	Peptide
Immunogen Description	Synthesized peptide derived from internal of human ERF.
Target Name	ERF
Other Names	ETS-domain transcription factor ERF; Ets2 repressor factor;
Accession No.	Swiss-Prot: P50548NCBI Gene ID: 2077
SDS-PAGE MW	59kd
Concentration	1.0mg/ml
Formulation	Rabbit IgG in phosphate buffered saline (without Mg ²⁺ and Ca ²⁺), pH 7.4, 150mM NaCl, 0.02% sodium azide and 50% glycerol.
Storage	Store at -20°C

Application Details

Immunohistochemistry: 1:50~1:100

Images



Immunohistochemistry analysis of paraffin-embedded human breast carcinoma tissue, using ERF antibody #33790.

Background

Potent transcriptional repressor that binds to the H1 element of the Ets2 promoter. May regulate other genes involved in cellular proliferation. Required

for extraembryonic ectoderm differentiation, ectoplacental cone cavity closure, and chorioallantoic attachment By similarity. May be important for regulating trophoblast stem cell differentiation By similarity.

Sgouras D.N., EMBO J. 14:4781-4793(1995).

Grimwood J., Nature 428:529-535(2004).

Olsen J.V., Cell 127:635-648(2006).

Note: This product is for in vitro research use only and is not intended for use in humans or animals.