

KAPCB Antibody

Catalog No: #33718

Package Size: #33718-1 50ul #33718-2 100ul

Orders: order@signalwayantibody.comSupport: tech@signalwayantibody.com

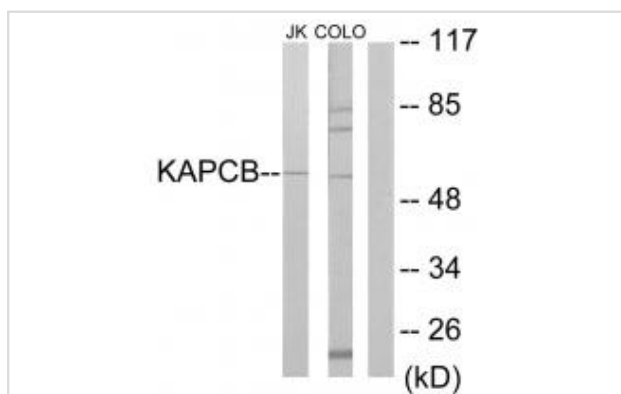
Description

Product Name	KAPCB Antibody
Host Species	Rabbit
Clonality	Polyclonal
Purification	The antibody was affinity-purified from rabbit antiserum by affinity-chromatography using epitope-specific immunogen.
Applications	WB
Species Reactivity	Hu Ms Rt
Specificity	The antibody detects endogenous levels of total KAPCB protein.
Immunogen Type	Peptide
Immunogen Description	Synthesized peptide derived from internal of human KAPCB.
Target Name	KAPCB
Other Names	EC 2.7.11.11; KAPB; KAPCB; PKA C-beta; PKA-beta
Accession No.	Swiss-Prot: P22694NCBI Gene ID: 5567
SDS-PAGE MW	53kd
Concentration	1.0mg/ml
Formulation	Rabbit IgG in phosphate buffered saline (without Mg ²⁺ and Ca ²⁺), pH 7.4, 150mM NaCl, 0.02% sodium azide and 50% glycerol.
Storage	Store at -20°C

Application Details

Western blotting: 1:500~1:3000

Images



Western blot analysis of extracts from Jurkat cells and COLO205 cells, using KAPCB antibody #33718.

Background

Mediates cAMP-dependent signaling triggered by receptor binding to GPCRs. PKA activation regulates diverse cellular processes such as cell

proliferation, the cell cycle, differentiation and regulation of microtubule dynamics, chromatin condensation and decondensation, nuclear envelope disassembly and reassembly, as well as regulation of intracellular transport mechanisms and ion flux. Regulates the abundance of compartmentalized pools of its regulatory subunits through phosphorylation of PJA2 which binds and ubiquitinates these subunits, leading to their subsequent proteolysis. Beebe S.J., Mol. Endocrinol. 4:465-475(1990).
Gregory S.G., Nature 441:315-321(2006).
Wu K.-J., Oncogene 21:7872-7882(2002).

Note: This product is for in vitro research use only and is not intended for use in humans or animals.