

TBP Antibody

Catalog No: #33709

Package Size: #33709-1 50ul #33709-2 100ul

Orders: order@signalwayantibody.comSupport: tech@signalwayantibody.com

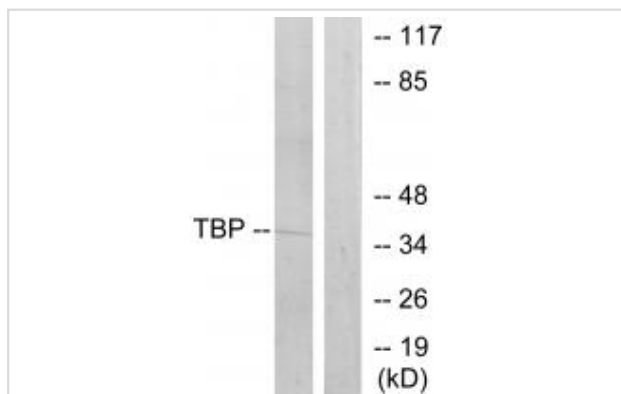
Description

Product Name	TBP Antibody
Host Species	Rabbit
Clonality	Polyclonal
Purification	The antibody was affinity-purified from rabbit antiserum by affinity-chromatography using epitope-specific immunogen.
Applications	WB
Species Reactivity	Hu Ms Rt
Specificity	The antibody detects endogenous levels of total TBP protein.
Immunogen Type	Peptide
Immunogen Description	Synthesized peptide derived from internal of human TBP.
Target Name	TBP
Other Names	TATA binding factor; TATA sequence-binding protein; TATA-box binding protein; TATA-box factor; TFIID
Accession No.	Swiss-Prot: P20226NCBI Gene ID: 6908
SDS-PAGE MW	38kd
Concentration	1.0mg/ml
Formulation	Rabbit IgG in phosphate buffered saline (without Mg ²⁺ and Ca ²⁺), pH 7.4, 150mM NaCl, 0.02% sodium azide and 50% glycerol.
Storage	Store at -20°C

Application Details

Western blotting: 1:500~1:3000

Images



Western blot analysis of extracts from 293 cells, using TBP antibody #33709.

Background

General transcription factor that functions at the core of the DNA-binding multiprotein factor TFIID. Binding of TFIID to the TATA box is the initial

transcriptional step of the pre-initiation complex (PIC), playing a role in the activation of eukaryotic genes transcribed by RNA polymerase II. Component of the transcription factor SL1/TIF-IB complex, which is involved in the assembly of the PIC (preinitiation complex) during RNA polymerase I-dependent transcription. The rate of PIC formation probably is primarily dependent on the rate of association of SL1 with the rDNA promoter. SL1 is involved in stabilization of nucleolar transcription factor 1/UBTF on rDNA.

Peterson M.G., *Science* 248:1625-1630(1990).

Mungall A.J., *Nature* 425:805-811(2003).

Gangloff Y.G., *Mol. Cell. Biol.* 21:5109-5121(2001).

Note: This product is for in vitro research use only and is not intended for use in humans or animals.