

ALDOA Antibody

Catalog No: #33649

Package Size: #33649-1 50ul #33649-2 100ul

Orders: order@signalwayantibody.comSupport: tech@signalwayantibody.com

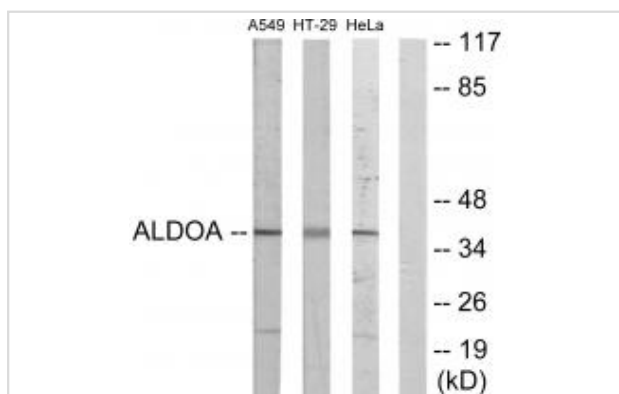
Description

Product Name	ALDOA Antibody
Host Species	Rabbit
Clonality	Polyclonal
Purification	The antibody was affinity-purified from rabbit antiserum by affinity-chromatography using epitope-specific immunogen.
Applications	WB
Species Reactivity	Hu Ms Rt
Specificity	The antibody detects endogenous levels of total ALDOA protein.
Immunogen Type	Peptide
Immunogen Description	Synthesized peptide derived from N-terminal of human ALDOA.
Target Name	ALDOA
Other Names	ALDA; ALDOA; ALFA; EC 4.1.2.13; Fructose-bisphosphate aldolase A
Accession No.	Swiss-Prot: P04075NCBI Gene ID: 226
SDS-PAGE MW	39kd
Concentration	1.0mg/ml
Formulation	Rabbit IgG in phosphate buffered saline (without Mg ²⁺ and Ca ²⁺), pH 7.4, 150mM NaCl, 0.02% sodium azide and 50% glycerol.
Storage	Store at -20°C

Application Details

Western blotting: 1:500~1:3000

Images



Western blot analysis of extracts from A549 cells, HT-29 cells and HeLa cells, using ALDOA antibody #33649.

Background

Plays a key role in glycolysis and gluconeogenesis. In addition, may also function as scaffolding protein By similarity.

Sakakibara M., Biochem. Biophys. Res. Commun. 131:413-420(1985).

Izzo P., Eur. J. Biochem. 164:9-13(1987).

Mukai T., Eur. J. Biochem. 195:781-787(1991).

Note: This product is for in vitro research use only and is not intended for use in humans or animals.