

TNFA Antibody

Catalog No: #33648

Package Size: #33648-1 50ul #33648-2 100ul

Orders: order@signalwayantibody.comSupport: tech@signalwayantibody.com

Description

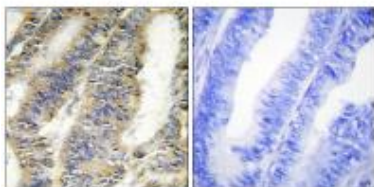
Product Name	TNFA Antibody
Host Species	Rabbit
Clonality	Polyclonal
Purification	The antibody was affinity-purified from rabbit antiserum by affinity-chromatography using epitope-specific immunogen.
Applications	IHC IF
Species Reactivity	Hu Ms
Specificity	The antibody detects endogenous levels of total TNFA protein.
Immunogen Type	Peptide
Immunogen Description	Synthesized peptide derived from internal of human TNFA.
Target Name	TNFA
Other Names	Protein name Tumor necrosis factor [Precursor]; TNF-alpha; Tumor necrosis factor ligand superfamily member 2; TNF-a; Cachectin
Accession No.	Swiss-Prot: P01375NCBI Gene ID: 7124
SDS-PAGE MW	26kd
Concentration	1.0mg/ml
Formulation	Rabbit IgG in phosphate buffered saline (without Mg ²⁺ and Ca ²⁺), pH 7.4, 150mM NaCl, 0.02% sodium azide and 50% glycerol.
Storage	Store at -20°C

Application Details

Immunohistochemistry: 1:50~1:100

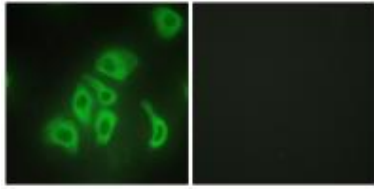
Immunofluorescence: 1:100~1:500

Images



Immunohistochemistry analysis of paraffin-embedded human colon carcinoma tissue, using TNFA antibody #33648.

Immunofluorescence analysis of HepG2 cells, using TNFA antibody #33648.



Background

Cytokine that binds to TNFRSF1A/TNFR1 and TNFRSF1B/TNFR. It is mainly secreted by macrophages and can induce cell death of certain tumor cell lines. It is potent pyrogen causing fever by direct action or by stimulation of interleukin-1 secretion and is implicated in the induction of cachexia, Under certain conditions it can stimulate cell proliferation and induce cell differentiation. The TNF intracellular domain (ICD) form induces IL12 production in dendritic cells.

Neville M.J., J. Immunol. 162:4745-4754(1999).

Xie T., Genome Res. 13:2621-2636(2003).

Kim Y.J., Hum. Mol. Genet. 12:2541-2546(2003).

Note: This product is for in vitro research use only and is not intended for use in humans or animals.