

Myc Antibody

Catalog No: #33647

Package Size: #33647-1 50ul #33647-2 100ul

Orders: order@signalwayantibody.comSupport: tech@signalwayantibody.com

Description

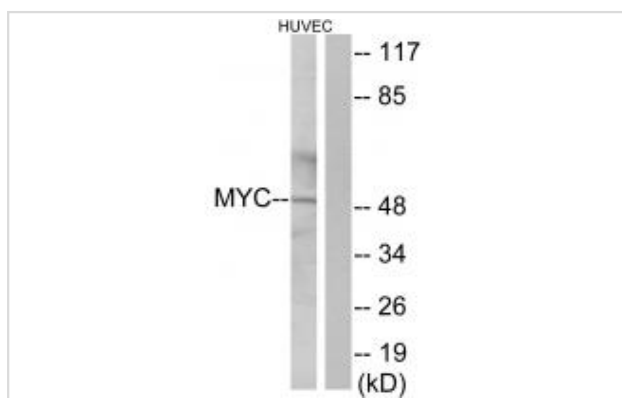
Product Name	Myc Antibody
Host Species	Rabbit
Clonality	Polyclonal
Purification	The antibody was affinity-purified from rabbit antiserum by affinity-chromatography using epitope-specific immunogen.
Applications	WB IHC
Species Reactivity	Hu Ms Rt
Specificity	The antibody detects endogenous levels of total Myc protein.
Immunogen Type	Peptide
Immunogen Description	Synthesized peptide derived from C-terminal of human Myc.
Target Name	Myc
Other Names	Myc proto-oncogene protein; c-myc;
Accession No.	Swiss-Prot: P01106NCBI Gene ID: 4609
SDS-PAGE MW	49kd
Concentration	1.0mg/ml
Formulation	Rabbit IgG in phosphate buffered saline (without Mg ²⁺ and Ca ²⁺), pH 7.4, 150mM NaCl, 0.02% sodium azide and 50% glycerol.
Storage	Store at -20°C

Application Details

Western blotting: 1:500~1:3000

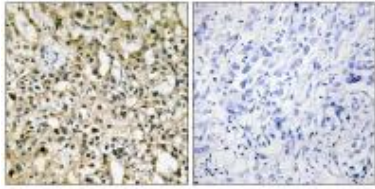
Immunohistochemistry: 1:50~1:100

Images



Western blot analysis of extracts from HUVEC cells, using Myc antibody #33647.

Immunohistochemistry analysis of paraffin-embedded human liver carcinoma tissue using Myc antibody #33647.



Background

Transcription factor that binds DNA in a non-specific manner, yet also specifically recognizes the core sequence 5'-CAC[GA]TG-3'. Activates the transcription of growth-related genes.

Batley J., Cell 34:779-787(1983).

Bernard O., EMBO J. 2:2375-2383(1983).

Colby W.W., Nature 301:722-725(1983).

Note: This product is for in vitro research use only and is not intended for use in humans or animals.