

MOS Antibody

Catalog No: #33645

Package Size: #33645-1 50ul #33645-2 100ul

Orders: order@signalwayantibody.comSupport: tech@signalwayantibody.com

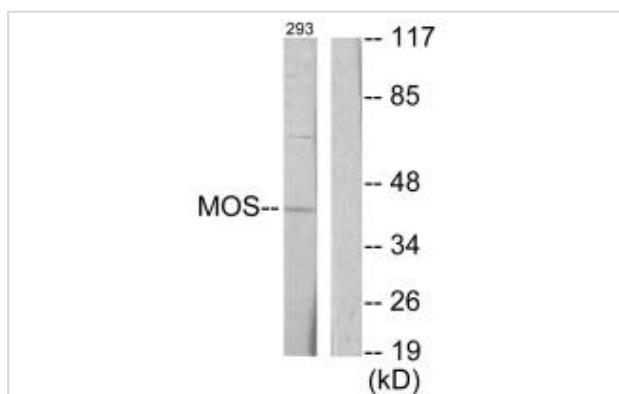
Description

Product Name	MOS Antibody
Host Species	Rabbit
Clonality	Polyclonal
Purification	The antibody was affinity-purified from rabbit antiserum by affinity-chromatography using epitope-specific immunogen.
Applications	WB
Species Reactivity	Hu
Specificity	The antibody detects endogenous levels of total MOS protein.
Immunogen Type	Peptide
Immunogen Description	Synthesized peptide derived from internal of human MOS.
Target Name	MOS
Other Names	ADRB2; EC 2.7.11.1; Proto-oncogene mos; c-mos; kinase Mos
Accession No.	Swiss-Prot: P00540NCBI Gene ID: 4342
SDS-PAGE MW	40kd
Concentration	1.0mg/ml
Formulation	Rabbit IgG in phosphate buffered saline (without Mg ²⁺ and Ca ²⁺), pH 7.4, 150mM NaCl, 0.02% sodium azide and 50% glycerol.
Storage	Store at -20°C

Application Details

Western blotting: 1:500~1:3000

Images



Western blot analysis of extracts from 293 cells, using MOS antibody #33645.

Background

MOS is a serine/threonine kinase that activates the MAP kinase cascade through direct phosphorylation of the MAP kinase activator MEK (MAP2K1;

MIM 176872) (Prasad et al., 2008 [PubMed 18246541]).[supplied by OMIM, Jul 2009]

Watson R., Proc. Natl. Acad. Sci. U.S.A. 79:4078-4082(1982).

The MGC Project Team, Genome Res. 14:2121-2127(2004).

Note: This product is for in vitro research use only and is not intended for use in humans or animals.