

Musculin Antibody

Catalog No: #33603



Package Size: #33603-1 50ul #33603-2 100ul

Orders: order@signalwayantibody.comSupport: tech@signalwayantibody.com

Description

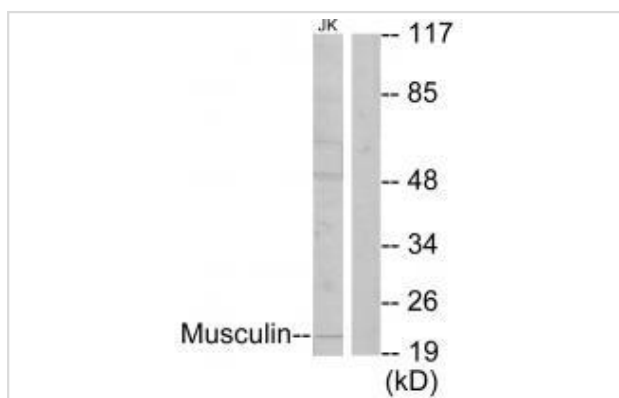
Product Name	Musculin Antibody
Host Species	Rabbit
Clonality	Polyclonal
Purification	The antibody was affinity-purified from rabbit antiserum by affinity-chromatography using epitope-specific immunogen.
Applications	WB IHC
Species Reactivity	Hu Ms
Specificity	The antibody detects endogenous levels of total Musculin protein.
Immunogen Type	Peptide
Immunogen Description	Synthesized peptide derived from internal of human Musculin.
Target Name	Musculin
Other Names	Musculin; Activated B-cell factor 1; ABF-1; MSC; ABF1
Accession No.	Swiss-Prot: O60682NCBI Gene ID: 9242
SDS-PAGE MW	22kd
Concentration	1.0mg/ml
Formulation	Rabbit IgG in phosphate buffered saline (without Mg ²⁺ and Ca ²⁺), pH 7.4, 150mM NaCl, 0.02% sodium azide and 50% glycerol.
Storage	Store at -20°C

Application Details

Western blotting: 1:500~1:3000

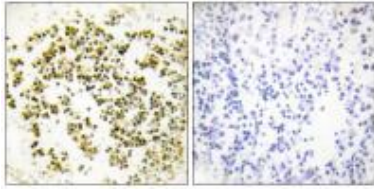
Immunohistochemistry: 1:50~1:100

Images



Western blot analysis of extracts from Jurkat cells, using Musculin antibody #33603.

Immunohistochemistry analysis of paraffin-embedded human lymph node tissue using Musculin antibody #33603.



Background

Transcription repressor capable of inhibiting the transactivation capability of TCF3/E47. May play a role in regulating antigen-dependent B-cell differentiation.

Massari M.E., Mol. Cell. Biol. 18:3130-3139(1998).

The MGC Project Team; Genome Res. 14:2121-2127(2004).

Robb L., Mech. Dev. 76:197-201(1998).

Note: This product is for in vitro research use only and is not intended for use in humans or animals.