

CTRO Antibody

Catalog No: #33565

Package Size: #33565-1 50ul #33565-2 100ul

Orders: order@signalwayantibody.comSupport: tech@signalwayantibody.com

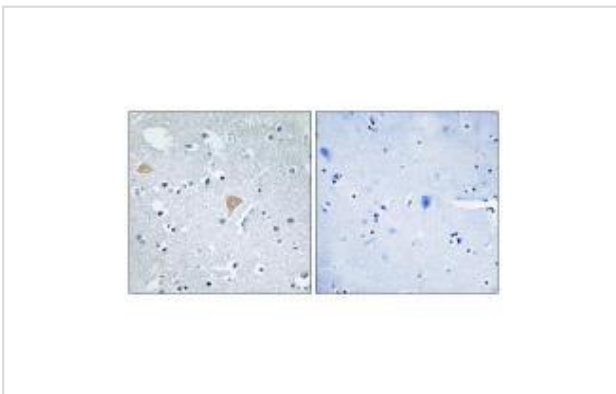
Description

Product Name	CTRO Antibody
Host Species	Rabbit
Clonality	Polyclonal
Purification	The antibody was affinity-purified from rabbit antiserum by affinity-chromatography using epitope-specific immunogen.
Applications	IHC
Species Reactivity	Hu
Specificity	The antibody detects endogenous levels of total CTRO protein.
Immunogen Type	Peptide
Immunogen Description	Synthesized peptide derived from internal of human CTRO.
Target Name	CTRO
Other Names	Citron Rho-interacting kinase; CRIK; Rho-interacting; serine/threonine-protein kinase 21; CIT
Accession No.	Swiss-Prot: O14578NCBI Gene ID: 11113
SDS-PAGE MW	231kd
Concentration	1.0mg/ml
Formulation	Rabbit IgG in phosphate buffered saline (without Mg ²⁺ and Ca ²⁺), pH 7.4, 150mM NaCl, 0.02% sodium azide and 50% glycerol.
Storage	Store at -20°C

Application Details

Immunohistochemistry: 1:50~1:100

Images



Immunohistochemistry analysis of paraffin-embedded human brain tissue using CTRO antibody #33565.

Background

Plays a role in cytokinesis. Required for KIF14 localization to the central spindle and midbody. Putative RHO/RAC effector that binds to the

GTP-bound forms of RHO and RAC1. It probably binds p21 with a tighter specificity in vivo. Dual specificity protein kinase activity catalyzing autophosphorylation and phosphorylation of exogenous substrates on both serine/threonine and tyrosine residues. Plays an important role in the regulation of cytokinesis and the development of the central nervous system. Phosphorylates MYL9/MLC2.

Nagase T., DNA Res. 6:63-70(1999).

Scherer S.E., Nature 440:346-351(2006).

Gruneberg U., J. Cell Biol. 172:363-372(2006).

Note: This product is for in vitro research use only and is not intended for use in humans or animals.