

Ubiquitin Antibody

Catalog No: #33537

Package Size: #33537-1 50ul #33537-2 100ul

Orders: order@signalwayantibody.comSupport: tech@signalwayantibody.com

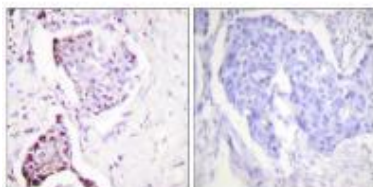
Description

Product Name	Ubiquitin Antibody
Host Species	Rabbit
Clonality	Polyclonal
Purification	The antibody was affinity-purified from rabbit antiserum by affinity-chromatography using epitope-specific immunogen.
Applications	IHC
Species Reactivity	Hu
Specificity	The antibody detects endogenous levels of total ubiquitin protein.
Immunogen Type	Peptide
Immunogen Description	Synthesized peptide derived from Internal of human Ubiquitin.
Target Name	Ubiquitin
Other Names	RPS27A; UBA52; UBA80; UBB; UBC
Accession No.	Swiss-Prot: P62988NCBI Gene ID: 7311
SDS-PAGE MW	9kd
Concentration	1.0mg/ml
Formulation	Rabbit IgG in phosphate buffered saline (without Mg ²⁺ and Ca ²⁺), pH 7.4, 150mM NaCl, 0.02% sodium azide and 50% glycerol.
Storage	Store at -20°C

Application Details

Immunohistochemistry: 1:50~1:100

Images



Immunohistochemistry analysis of paraffin-embedded human breast carcinoma tissue, using Ubiquitin antibody #33537.

Background

Ubiquitin is a highly conserved nuclear and cytoplasmic protein that has a major role in targeting cellular proteins for degradation by the 26S

proteasome. It is also involved in the maintenance of chromatin structure, the regulation of gene expression, and the stress response. Ubiquitin is synthesized as a precursor protein consisting of either polyubiquitin chains or a single ubiquitin moiety fused to an unrelated protein. This gene encodes a fusion protein consisting of ubiquitin at the N terminus and ribosomal protein L40 at the C terminus, a C-terminal extension protein (CEP). Multiple processed pseudogenes derived from this gene are present in the genome.

John Hanna, *Mol. Cell. Biol.*, Dec 2003; 23: 9251 - 9261.

Matthias Majetschak, *Blood*, Mar 2003; 101: 1882 - 1890.

Fu Shang, *J. Biol. Chem.*, May 2005; 280: 20365 - 20374.

Joerg Herrmann, *Circ. Res.*, May 2007; 100: 1276 - 1291.

Note: This product is for in vitro research use only and is not intended for use in humans or animals.