

## Synaptophysin Antibody

Catalog No: #33492



Package Size: #33492-1 50ul #33492-2 100ul

Orders: [order@signalwayantibody.com](mailto:order@signalwayantibody.com)Support: [tech@signalwayantibody.com](mailto:tech@signalwayantibody.com)

## Description

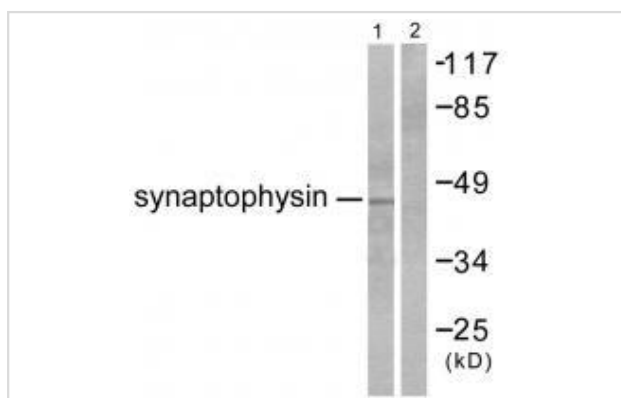
Product Name	Synaptophysin Antibody
Host Species	Rabbit
Clonality	Polyclonal
Purification	The antibody was affinity-purified from rabbit antiserum by affinity-chromatography using epitope-specific immunogen.
Applications	WB IHC
Species Reactivity	Hu Ms Rt
Specificity	The antibody detects endogenous levels of total Synaptophysin protein.
Immunogen Type	Peptide
Immunogen Description	Synthesized peptide derived from human Synaptophysin.
Target Name	Synaptophysin
Other Names	major synaptic vesicle protein p38; synaptophysin;
Accession No.	Swiss-Prot: P08247NCBI Gene ID: 6855
SDS-PAGE MW	38kd
Concentration	1.0mg/ml
Formulation	Rabbit IgG in phosphate buffered saline (without Mg <sup>2+</sup> and Ca <sup>2+</sup> ), pH 7.4, 150mM NaCl, 0.02% sodium azide and 50% glycerol.
Storage	Store at -20°C

## Application Details

Western blotting: 1:500~1:3000

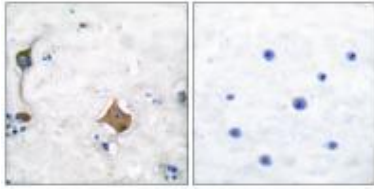
Immunohistochemistry: 1:50~1:100

## Images



Western blot analysis of extracts from LOVO cells, using Synaptophysin antibody #33492.

Immunohistochemical analysis of paraffin-embedded human brain tissue using Synaptophysin antibody #33492.



## Background

Possibly involved in structural functions as organizing other membrane components or in targeting the vesicles to the plasma membrane. Involved in the regulation of short-term and long-term synaptic plasticity By similarity.

Tiffany C. Wheeler, J. Biol. Chem., Mar 2002; 277: 10273 - 10282.

RE Leube, J. Cell Biol., Dec 1994; 127: 1589.

Reinhard Jahn, J. Neurosci., Mar 1999; 19: 1922.

PL Cameron, J. Cell Biol., Oct 1991; 115: 151.

Note: This product is for in vitro research use only and is not intended for use in humans or animals.