

Patched Antibody

Catalog No: #33466



Package Size: #33466-1 50ul #33466-2 100ul

Orders: order@signalwayantibody.comSupport: tech@signalwayantibody.com

Description

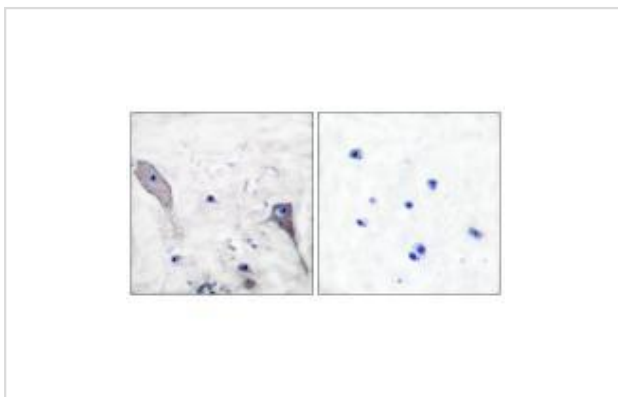
Product Name	Patched Antibody
Host Species	Rabbit
Clonality	Polyclonal
Purification	The antibody was affinity-purified from rabbit antiserum by affinity-chromatography using epitope-specific immunogen.
Applications	WB IHC
Species Reactivity	Hu Ms
Specificity	The antibody detects endogenous levels of total Patched protein.
Immunogen Type	Peptide
Immunogen Description	Synthesized peptide derived from human Patched.
Target Name	Patched
Other Names	DROSOPHILA HOMOLOG OF 1; patched homolog (Drosophila);
Accession No.	Swiss-Prot: Q13635NCBI Gene ID: 5727
SDS-PAGE MW	160kd
Concentration	1.0mg/ml
Formulation	Rabbit IgG in phosphate buffered saline (without Mg ²⁺ and Ca ²⁺), pH 7.4, 150mM NaCl, 0.02% sodium azide and 50% glycerol.
Storage	Store at -20°C

Application Details

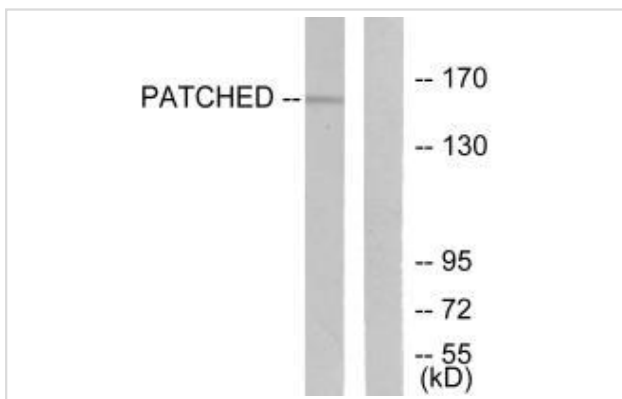
Western blotting: 1:500~1:3000

Immunohistochemistry: 1:50~1:100

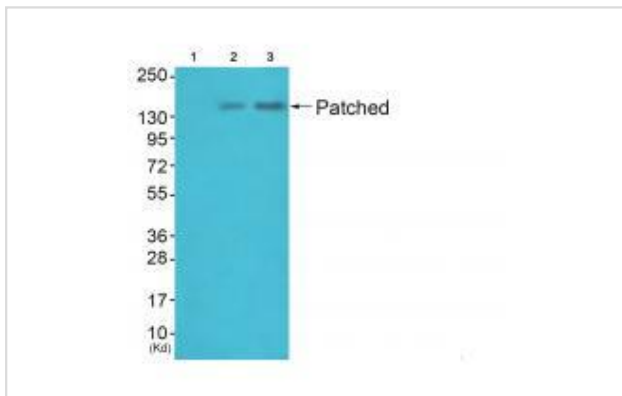
Images



Immunohistochemical analysis of paraffin-embedded human brain tissue using Patched antibody #33466.



Western blot analysis of extracts from mouse muscle cells, using Patched antibody #33466.



Western blot analysis of extracts from 3T3 cells (Lane 2) and HepG2 cells (Lane 3), using Patched antibody #33466. The lane on the left is treated with synthesized peptide.

Background

Acts as a receptor for sonic hedgehog (SHH), indian hedgehog (IHH) and desert hedgehog (DHH). Associates with the smoothed protein (SMO) to transduce the hedgehog's proteins signal. Seems to have a tumor suppressor function, as inactivation of this protein is probably a necessary, if not sufficient step for tumorigenesis.

Trudy G. Oliver, *Development*, May 2005; 132: 2425 - 2439.

Florence Brellier, *Cancer Res.*, Apr 2004; 64: 2699 - 2704.

Heidi Hahn, *J. Biol. Chem.*, May 1996; 271: 12125.

RL Johnson, *Development*, Dec 1995; 121: 4161.

Note: This product is for in vitro research use only and is not intended for use in humans or animals.