

NSE Antibody

Catalog No: #33451

Package Size: #33451-1 50ul #33451-2 100ul

Orders: order@signalwayantibody.comSupport: tech@signalwayantibody.com

Description

Product Name	NSE Antibody
Host Species	Rabbit
Clonality	Polyclonal
Purification	The antibody was affinity-purified from rabbit antiserum by affinity-chromatography using epitope-specific immunogen.
Applications	WB IHC IF
Species Reactivity	Hu
Specificity	The antibody detects endogenous levels of total NSE protein.
Immunogen Type	Peptide
Immunogen Description	Synthesized peptide derived from human NSE.
Target Name	NSE
Other Names	2-phospho-D-glycerate hydro-lyase; ENOG; Enolase 2; Gamma enolase; Neural enolase
Accession No.	Swiss-Prot: P09104NCBI Gene ID: 2026
SDS-PAGE MW	47kd
Concentration	1.0mg/ml
Formulation	Rabbit IgG in phosphate buffered saline (without Mg ²⁺ and Ca ²⁺), pH 7.4, 150mM NaCl, 0.02% sodium azide and 50% glycerol.
Storage	Store at -20°C

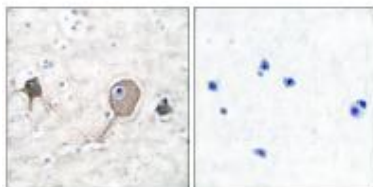
Application Details

Western blotting: 1:500~1:3000

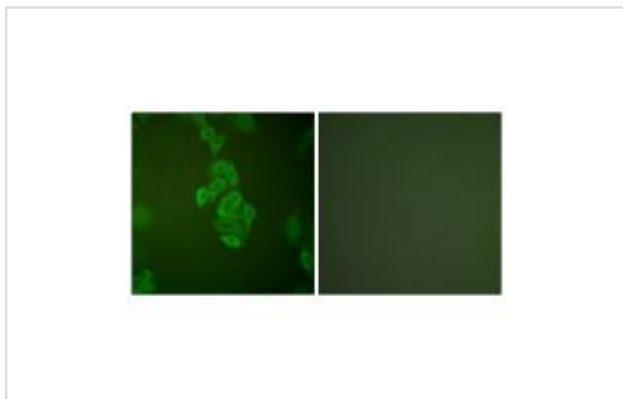
Immunohistochemistry: 1:50~1:100

Immunofluorescence: 1:100~1:500

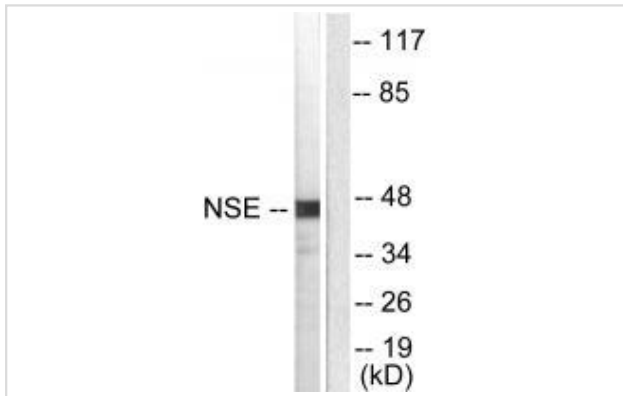
Images



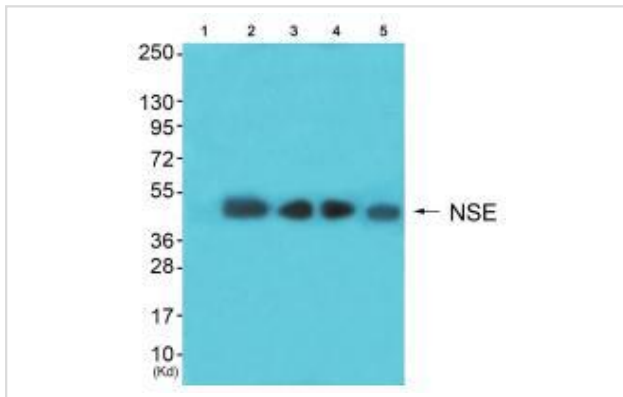
Immunohistochemical analysis of paraffin-embedded human brain tissue using NSE antibody #33451.



Immunofluorescence analysis of A549 cells, using NSE antibody #33451.



Western blot analysis of extracts from HepG2 cells, using NSE antibody #33451.



Western blot analysis of extracts from Hela cells (Lane 2), colo cells (Lane 3) B£B-HepG2 cells (Lane 4) and 293 cells (Lane 5), using NSE antibody #33451. The lane on the left is treated with synthesized peptide.

Background

Has neurotrophic and neuroprotective properties on a broad spectrum of central nervous system (CNS) neurons. Binds, in a calcium-dependent manner, to cultured neocortical neurons and promotes cell survival By similarity. HAMAP-Rule MF_00318

RH Stead, J. Neurosci., Dec 1991; 11: 3809.

A. Koenig, Vet. Pathol., Jul 2001; 38: 427.

Samrad Mehrabi, Chest Meeting Abstracts, Oct 2005; 128: 358S.

G Paone, Eur. Respir. J., Jul 1995; 8: 1136 - 1140.

Note: This product is for in vitro research use only and is not intended for use in humans or animals.