

Mammaglobin Antibody

Catalog No: #33427



Package Size: #33427-1 50ul #33427-2 100ul

Orders: order@signalwayantibody.comSupport: tech@signalwayantibody.com

Description

Product Name	Mammaglobin Antibody
Host Species	Rabbit
Clonality	Polyclonal
Purification	The antibody was affinity-purified from rabbit antiserum by affinity-chromatography using epitope-specific immunogen.
Applications	WB IHC IF
Species Reactivity	Hu Rt
Specificity	The antibody detects endogenous levels of total mammaglobin protein.
Immunogen Type	Peptide
Immunogen Description	Synthesized peptide derived from human mammaglobin .
Target Name	Mammaglobin
Other Names	MGB1; MAMMAGLOBIN 1; secretoglobin; family 2A; member 2
Accession No.	Swiss-Prot: Q13296NCBI Gene ID: 4250
SDS-PAGE MW	20kd
Concentration	1.0mg/ml
Formulation	Rabbit IgG in phosphate buffered saline (without Mg ²⁺ and Ca ²⁺), pH 7.4, 150mM NaCl, 0.02% sodium azide and 50% glycerol.
Storage	Store at -20°C

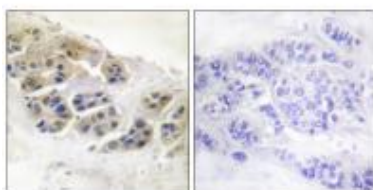
Application Details

Western blotting: 1:500~1:3000

Immunohistochemistry: 1:50~1:100

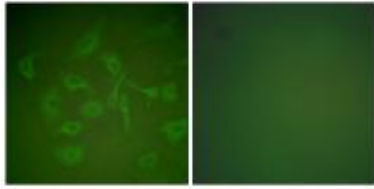
Immunofluorescence: 1:100~1:500

Images

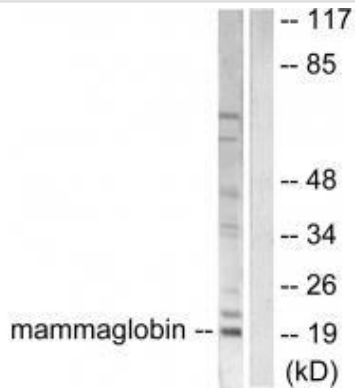


Immunohistochemistry analysis of paraffin-embedded human breast carcinoma tissue using Mammaglobin antibody #33427.

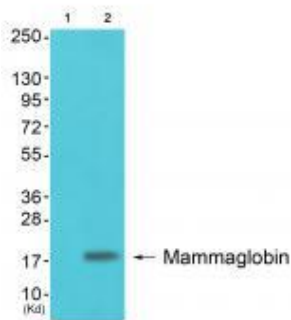
Immunofluorescence analysis of HepG2 cells, using Mammaglobin antibody #33427.



Western blot analysis of extracts from HepG2 cells, using Mammaglobin antibody #33427.



Western blot analysis of extracts from colo cells (Lane 2), using Mammaglobin antibody #33427. The lane on the left is treated with synthesized peptide.



Background

Belongs to the secretoglobulin family. Lipophilin subfamily. 2 isoforms of the human protein are produced by alternative splicing.?

Kishore Narayanan, J Natl Cancer Inst, Sep 2004; 96: 1388 - 1396.

Jonine L. Bernstein, Clin. Cancer Res., Sep 2005; 11: 6528 - 6535.

Barbara K. Zehentner, Clin. Chem., Nov 2004; 50: 2069 - 2076.

Paul N. Span, J. Clin. Oncol., Feb 2004; 22: 691 - 698.

Note: This product is for in vitro research use only and is not intended for use in humans or animals.