

Ki67 Antibody

Catalog No: #33423

Package Size: #33423-1 50ul #33423-2 100ul

Orders: order@signalwayantibody.comSupport: tech@signalwayantibody.com

Description

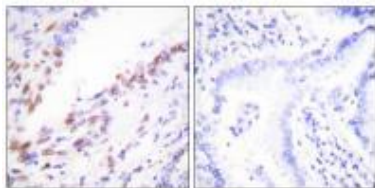
Product Name	Ki67 Antibody
Host Species	Rabbit
Clonality	Polyclonal
Purification	The antibody was affinity-purified from rabbit antiserum by affinity-chromatography using epitope-specific immunogen.
Applications	IHC IF
Species Reactivity	Hu
Specificity	The antibody detects endogenous levels of total ki67protein.
Immunogen Type	Peptide
Immunogen Description	Synthesized peptide derived from C-terminal of human ki67.
Target Name	Ki67
Other Names	Antigen KI-67; MKI67;
Accession No.	Swiss-Prot: P46013NCBI Gene ID: 4288
SDS-PAGE MW	360kd
Concentration	1.0mg/ml
Formulation	Rabbit IgG in phosphate buffered saline (without Mg ²⁺ and Ca ²⁺), pH 7.4, 150mM NaCl, 0.02% sodium azide and 50% glycerol.
Storage	Store at -20°C

Application Details

Immunohistochemistry: 1:50~1:100

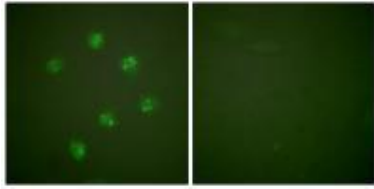
Immunofluorescence: 1:100~1:500

Images



Immunohistochemistry analysis of paraffin-embedded human lung carcinoma tissue, using Ki67 antibody #33423.

Immunofluorescence analysis of COS7 cells, using Ki67 antibody #33423.



Background

Thought to be required for maintaining cell proliferation.

Mitch Dowsett, *J Natl Cancer Inst*, Jan 2007; 99: 167 - 170.

Phyllis A. Gimotty, *J. Clin. Oncol*, Nov 2005; 23: 8048 - 8056.

Tim J. Dudderidge, *Clin. Cancer Res.*, Apr 2005; 11: 2510 - 2517.

Scott F. Sieg, *J. Immunol.*, Nov 2003; 171: 5208.

Note: This product is for in vitro research use only and is not intended for use in humans or animals.