

Gastrin Antibody

Catalog No: #33384

Package Size: #33384-1 50ul #33384-2 100ul

Orders: order@signalwayantibody.comSupport: tech@signalwayantibody.com

Description

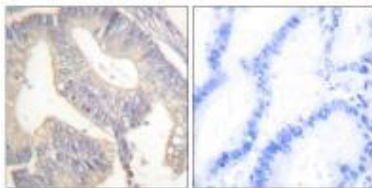
Product Name	Gastrin Antibody
Host Species	Rabbit
Clonality	Polyclonal
Purification	The antibody was affinity-purified from rabbit antiserum by affinity-chromatography using epitope-specific immunogen.
Applications	WB IHC
Species Reactivity	Hu Ms
Specificity	The antibody detects endogenous levels of total Gastrin protein.
Immunogen Type	Peptide
Immunogen Description	Synthesized peptide derived from human Gastrin.
Target Name	Gastrin
Other Names	Component II; GAS; GAST; gastrin precursor;
Accession No.	Swiss-Prot: P01350NCBI Gene ID: 2520
SDS-PAGE MW	12kd
Concentration	1.0mg/ml
Formulation	Rabbit IgG in phosphate buffered saline (without Mg ²⁺ and Ca ²⁺), pH 7.4, 150mM NaCl, 0.02% sodium azide and 50% glycerol.
Storage	Store at -20°C

Application Details

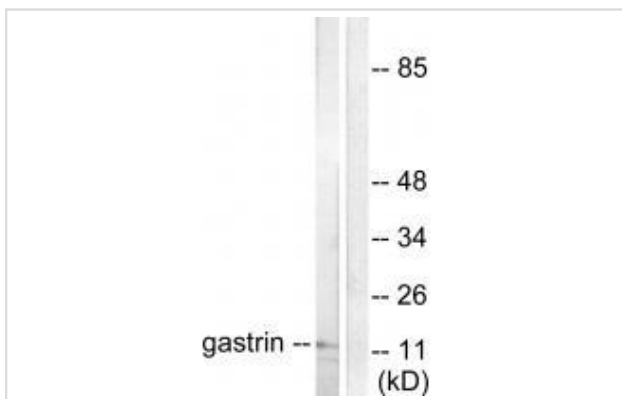
Western blotting: 1:500~1:3000

Immunohistochemistry: 1:50~1:100

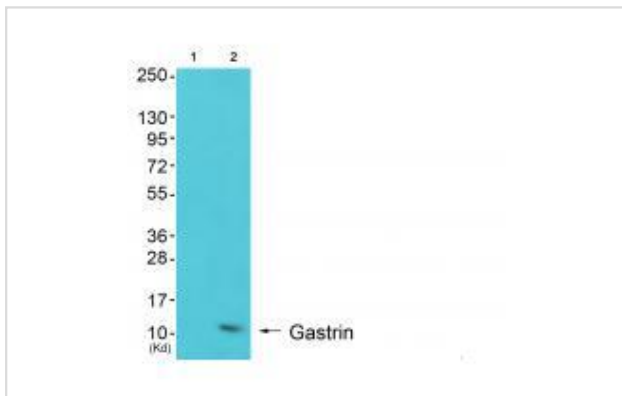
Images



Immunohistochemical analysis of paraffin-embedded human colon carcinoma tissue using Gastrin antibody #33384.



Western blot analysis of extracts from NIH/3T3 cells, using Gastrin antibody #33384.



Western blot analysis of extracts from K562 cells (Lane 2), using Gastrin antibody #33384. The lane on the left is treated with synthesized peptide.

Background

Gastrin stimulates the stomach mucosa to produce and secrete hydrochloric acid and the pancreas to secrete its digestive enzymes. It also stimulates smooth muscle contraction and increases blood circulation and water secretion in the stomach and intestine.

MarlB`B`ne Dufresne, *Physiol Rev*, Jul 2006; 86: 805 - 847.

T. C. Wang, Tillotson, M. Chulak, S. J. Brand, and E. V. Schmidt

D. H. Yu, *Am J Physiol Gastrointest Liver Physiol*, Dec 1987; 253: 793.

Masato Komori, *Am J Physiol Gastrointest Liver Physiol*, Dec 20

Note: This product is for in vitro research use only and is not intended for use in humans or animals.