

## GANP Antibody

Catalog No: #33383

Package Size: #33383-1 50ul #33383-2 100ul

Orders: [order@signalwayantibody.com](mailto:order@signalwayantibody.com)Support: [tech@signalwayantibody.com](mailto:tech@signalwayantibody.com)

## Description

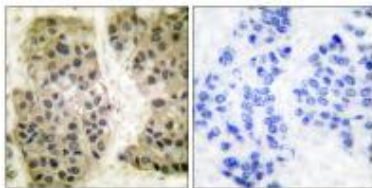
Product Name	GANP Antibody
Host Species	Rabbit
Clonality	Polyclonal
Purification	The antibody was affinity-purified from rabbit antiserum by affinity-chromatography using epitope-specific immunogen.
Applications	WB IHC IF
Species Reactivity	Hu Ms
Specificity	The antibody detects endogenous levels of total GANP protein.
Immunogen Type	Peptide
Immunogen Description	Synthesized peptide derived from human GANP.
Target Name	GANP
Other Names	80 kda MCM3-associated protein; GANP protein; KIAA0572; MAP80; MCM3A
Accession No.	Swiss-Prot: O60318NCBI Gene ID: 8888
SDS-PAGE MW	218kd
Concentration	1.0mg/ml
Formulation	Rabbit IgG in phosphate buffered saline (without Mg <sup>2+</sup> and Ca <sup>2+</sup> ), pH 7.4, 150mM NaCl, 0.02% sodium azide and 50% glycerol.
Storage	Store at -20°C

## Application Details

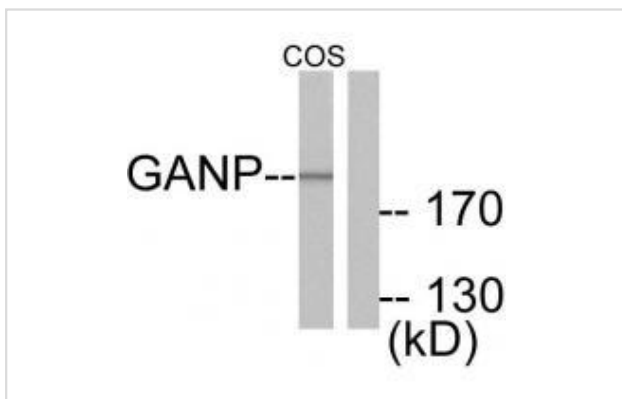
Western blotting: 1:500~1:3000

Immunohistochemistry: 1:50~1:100

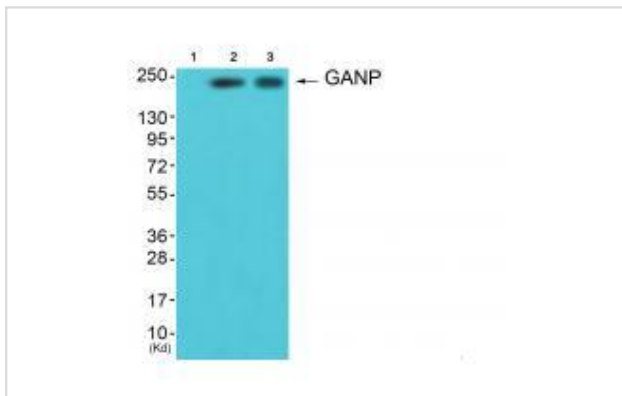
## Images



Immunohistochemical analysis of paraffin-embedded human breast carcinoma tissue using GANP antibody #33383.



Western blot analysis of extracts from NIH/3T3 cells, using GANP antibody #33383.



Western blot analysis of extracts from HepG2 cells (Lane 2) and A549 cells (Lane 3), using GANP antibody #33383. The lane on the left is treated with synthesized peptide.

## Background

Isoform GANP: Essential for the generation of high-affinity B-cells against T-cell-dependent antigens by affecting somatic hypermutation at the IgV-regions. May have stimulation-dependent DNA primase activity that would generate extra RNA primers in very rapidly proliferating cells and would support clonal expansion of differentiating B-cells. By similarity. Involved in the nuclear export of poly(A)-containing mRNAs by acting as a scaffold for the TREX-2 complex. The TREX-2 complex functions in docking export-competent ribonucleoprotein particles (mRNPs) to the nuclear entrance of the nuclear pore complex (nuclear basket). TREX-2 participates in mRNA export and accurate chromatin positioning in the nucleus by tethering genes to the nuclear periphery. Isoform MCM3AP: Acetyltransferase targeting MCM3. Inhibits initiation of DNA replication, but not elongation.

Nobuo Sakaguchi, *J. Immunol.*, Apr 2005; 174: 4485 - 4494.

Kazuhiko Kuwahara, *Blood*, Apr 2000; 95: 2321 - 2328.

Y Kono, K Maeda, *Genes Cells*, Aug 2002; 7: 821 - 834.

Kazuhiko Kuwahara, *PNAS*, Aug 2001; 98: 10279.

Note: This product is for in vitro research use only and is not intended for use in humans or animals.