

## Desmin Antibody

Catalog No: #33355

Package Size: #33355-1 50ul #33355-2 100ul

Orders: [order@signalwayantibody.com](mailto:order@signalwayantibody.com)Support: [tech@signalwayantibody.com](mailto:tech@signalwayantibody.com)

## Description

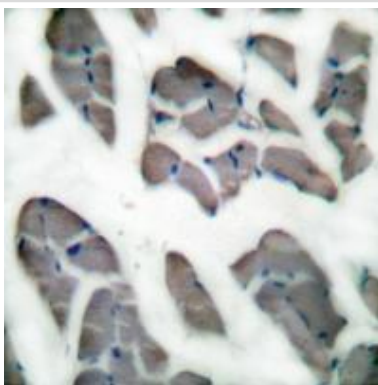
Product Name	Desmin Antibody
Host Species	Rabbit
Clonality	Polyclonal
Purification	The antibody was affinity-purified from rabbit antiserum by affinity-chromatography using epitope-specific immunogen.
Applications	WB IHC
Species Reactivity	Hu Ms Rt
Specificity	The antibody detects endogenous levels of total Desmin protein.
Immunogen Type	Peptide
Immunogen Description	Synthesized peptide derived from human Desmin.
Target Name	Desmin
Other Names	CMD11; CSM1; CSM2; FLJ12025; FLJ39719
Accession No.	Swiss-Prot: P17661NCBI Gene ID: 1674
SDS-PAGE MW	55kd
Concentration	1.0mg/ml
Formulation	Rabbit IgG in phosphate buffered saline (without Mg <sup>2+</sup> and Ca <sup>2+</sup> ), pH 7.4, 150mM NaCl, 0.02% sodium azide and 50% glycerol.
Storage	Store at -20°C

## Application Details

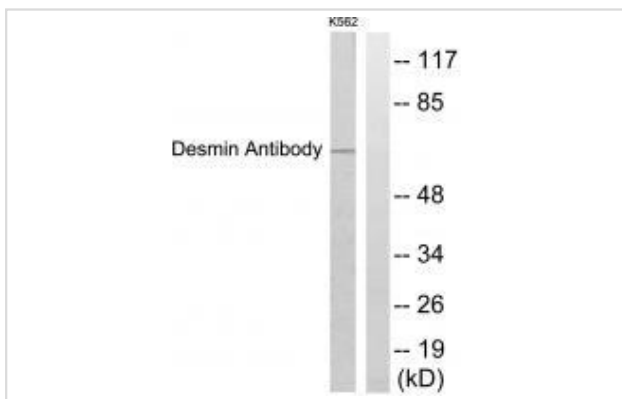
Western blotting: 1:500~1:3000

Immunohistochemistry: 1:50~1:100

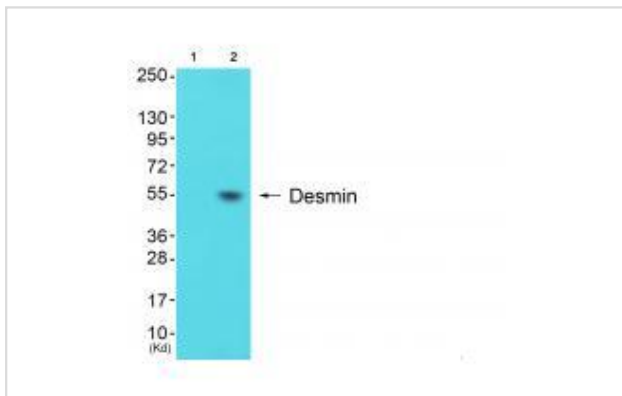
## Images



Immunohistochemical analysis of paraffin-embedded human muscle tissue using Desmin antibody #33355.



Western blot analysis of extracts from K562 cells, using Desmin antibody #33355.



Western blot analysis of extracts from 293 cells (Lane 2), using Desmin antibody #33355. The lane on the left is treated with synthesized peptide.

## Background

Desmin are class-III intermediate filaments found in muscle cells. In adult striated muscle they form a fibrous network connecting myofibrils to each other and to the plasma membrane from the periphery of the Z-line structures.

Ming Der Perng, *Mol. Biol. Cell*, May 2004; 15: 2335 - 2346.

L. G. Goldfarb, *Brain*, Apr 2004; 127: 723 - 734.

Rolf Schröder, *Hum. Mol. Genet.*, Mar 2003; 12: 657 - 669.

H Li, *J. Cell Biol.*, Mar 1994; 124: 827.

Note: This product is for in vitro research use only and is not intended for use in humans or animals.