

Claudin 7 Antibody

Catalog No: #33339



Package Size: #33339-1 50ul #33339-2 100ul

Orders: order@signalwayantibody.comSupport: tech@signalwayantibody.com

Description

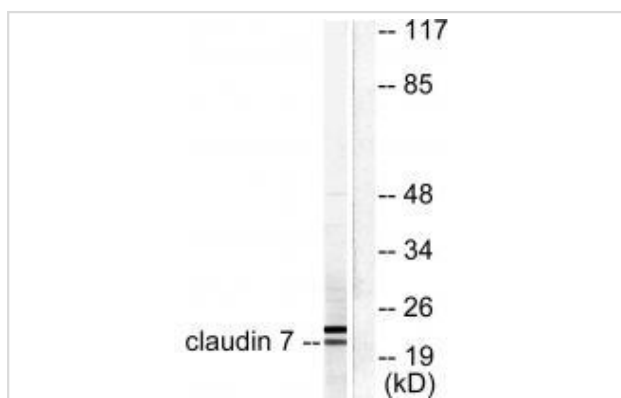
Product Name	Claudin 7 Antibody
Host Species	Rabbit
Clonality	Polyclonal
Purification	The antibody was affinity-purified from rabbit antiserum by affinity-chromatography using epitope-specific immunogen.
Applications	WB IHC
Species Reactivity	Hu Ms Rt
Specificity	The antibody detects endogenous levels of total Claudin 7 protein.
Immunogen Type	Peptide
Immunogen Description	Synthesized peptide derived from human Claudin 7.
Target Name	Claudin 7
Other Names	CEPTRL2; CPETRL2; claudin-1; Clostridium perfringens enterotoxin receptor-like 2; claudin 9
Accession No.	Swiss-Prot: O95471NCBI Gene ID: 1366
SDS-PAGE MW	22kd
Concentration	1.0mg/ml
Formulation	Rabbit IgG in phosphate buffered saline (without Mg ²⁺ and Ca ²⁺), pH 7.4, 150mM NaCl, 0.02% sodium azide and 50% glycerol.
Storage	Store at -20°C

Application Details

Western blotting: 1:500~1:3000

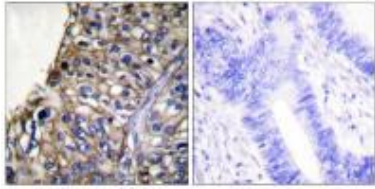
Immunohistochemistry: 1:50~1:100

Images



Western blot analysis of extracts from 293 cells, using Claudin 7 antibody #33339.

Immunohistochemical analysis of paraffin-embedded human lung carcinoma tissue using Claudin 7 antibody #33339.



Background

Plays a major role in tight junction-specific obliteration of the intercellular space By similarity.

Michele D. Alexandre, J. Cell Sci., Jun 2005; 118: 2683 - 2693.

Mercedes Lioni, Am. J. Pathol., Feb 2007; 170: 709 - 721.

Hiroki Fujita, J. Histochem. Cytochem., Aug 2006; 54: 933 - 944.

Wing Y. Li, Am J Physiol Renal Physiol, Jun 2004; 286: F1063 - F1071

Note: This product is for in vitro research use only and is not intended for use in humans or animals.