

Claudin 7 (Ab-210) Antibody

Catalog No: #33279



Package Size: #33279-1 50ul #33279-2 100ul

Orders: order@signalwayantibody.comSupport: tech@signalwayantibody.com

Description

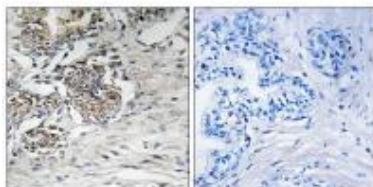
Product Name	Claudin 7 (Ab-210) Antibody
Host Species	Rabbit
Clonality	Polyclonal
Purification	The antibody was affinity-purified from rabbit antiserum by affinity-chromatography using epitope-specific immunogen.
Applications	WB IHC
Species Reactivity	Hu Rt
Specificity	The antibody detects endogenous levels of total Claudin 7 protein.
Immunogen Type	Peptide
Immunogen Description	Synthesized non-phosphopeptide derived from human Claudin 7 around the phosphorylation site of tyrosine 210 (S-K-E-Y(p)-V).
Target Name	Claudin 7
Other Names	CEPTRL2; claudin 7; claudin 9; claudin-1; claudin-7
Accession No.	Swiss-Prot: O95471NCBI Gene ID: 1366
SDS-PAGE MW	32kd
Concentration	1.0mg/ml
Formulation	Rabbit IgG in phosphate buffered saline (without Mg ²⁺ and Ca ²⁺), pH 7.4, 150mM NaCl, 0.02% sodium azide and 50% glycerol.
Storage	Store at -20°C

Application Details

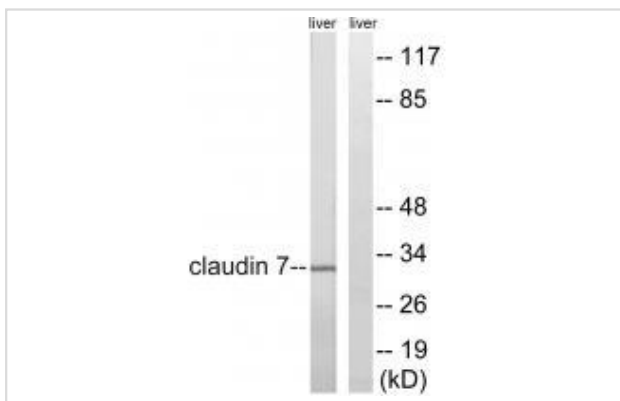
Western blotting: 1:500~1:3000

Immunohistochemistry: 1:50~1:100

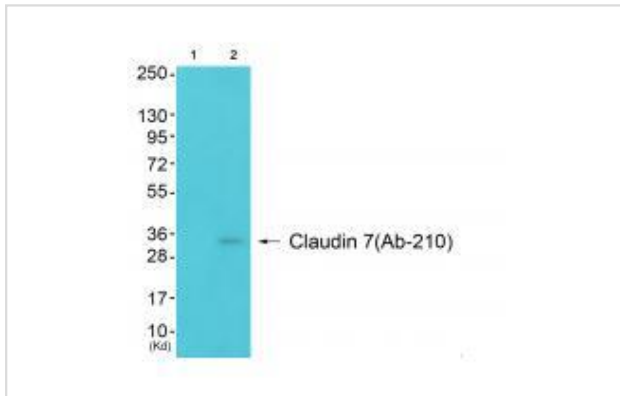
Images



Immunohistochemistry analysis of paraffin-embedded human prostate carcinoma tissue using Claudin 7 (Ab-210) antibody #33279.



Western blot analysis of extracts from rat liver cells, using Claudin 7 (Ab-210) antibody #33279.



Western blot analysis of extracts from 3T3 cells (Lane 2), using Claudin 7 (Ab-210) antibody #33279. The lane on the left is treated with synthesized peptide.

Background

Plays a major role in tight junction-specific obliteration of the intercellular space By similarity.

Keen T.J.; Submitted (SEP-1998) to the EMBL/GenBank/DDBJ databases.

Kalnine N.; Submitted (MAY-2003) to the EMBL/GenBank/DDBJ databases.

The MGC Project Team; Genome Res. 14:2121-2127(2004).

Note: This product is for in vitro research use only and is not intended for use in humans or animals.