

## BTAF1 Antibody

Catalog No: #33059

Orders: [order@signalwayantibody.com](mailto:order@signalwayantibody.com)Support: [tech@signalwayantibody.com](mailto:tech@signalwayantibody.com)

## Description

Product Name	BTAF1 Antibody
Host Species	Rabbit
Clonality	Polyclonal
Purification	Antibodies were purified by affinity purification using immunogen.
Applications	WB IHC IF IP CHIP
Species Reactivity	Hu
Specificity	The antibody detects endogenous level of total BTAF1 protein.
Immunogen Type	Recombinant Protein
Immunogen Description	Recombinant protein of human BTAF1.
Target Name	BTAF1
Other Names	MOT1; TAF172; TAFII170; TAF(II)170;
Accession No.	Swiss-Prot:O14981NCBI Gene ID:9044
SDS-PAGE MW	206KD
Concentration	1.0mg/ml
Formulation	Supplied at 1.0mg/mL in phosphate buffered saline (without Mg <sup>2+</sup> and Ca <sup>2+</sup> ), pH 7.4, 150mM NaCl, 0.02% sodium azide and 50% glycerol.
Storage	Store at -20°C

## Application Details

Western blotting: 1:500 - 1:2000

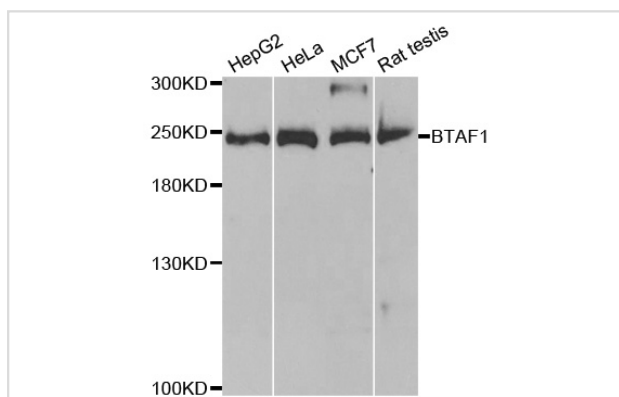
Immunohistochemistry: 1:50 - 1:200

Immunofluorescence: 1:50 - 1:200

Immunoprecipitation: 1:20 - 1:100

Chromatin immunoprecipitation: 1:20 - 1:100

## Images



Western blot analysis of extracts of various cell lines, using BTAF1 antibody.

## Background

---

This gene encodes a TAF (TATA box-binding protein-associated factor), which associates with TBP (TATA box-binding protein) to form the B-TFIID complex that is required for transcription initiation of genes by RNA polymerase II. This TAF has DNA-dependent ATPase activity, which drives the dissociation of TBP from DNA, freeing the TBP to associate with other TATA boxes or TATA-less promoters.

---

Note: This product is for in vitro research use only and is not intended for use in humans or animals.