

## EZH2 Antibody

Catalog No: #33009

Orders: order@signalwayantibody.com

Support: tech@signalwayantibody.com

## Description

Product Name	EZH2 Antibody
Host Species	Rabbit
Clonality	Polyclonal
Purification	Antibodies were purified by affinity purification using immunogen.
Applications	WB IHC IF
Species Reactivity	Hu Ms Rt
Specificity	The antibody detects endogenous level of total EZH2 protein.
Immunogen Type	Recombinant Protein
Immunogen Description	Recombinant protein of human EZH2.
Target Name	EZH2
Other Names	WWS; ENX1; EZH1; KMT6; WWS2
Accession No.	Swiss-Prot:Q15910NCBI Gene ID:2146
SDS-PAGE MW	85KD
Concentration	1.0mg/ml
Formulation	Supplied at 1.0mg/mL in phosphate buffered saline (without Mg <sup>2+</sup> and Ca <sup>2+</sup> ), pH 7.4, 150mM NaCl, 0.02% sodium azide and 50% glycerol.
Storage	Store at -20°C

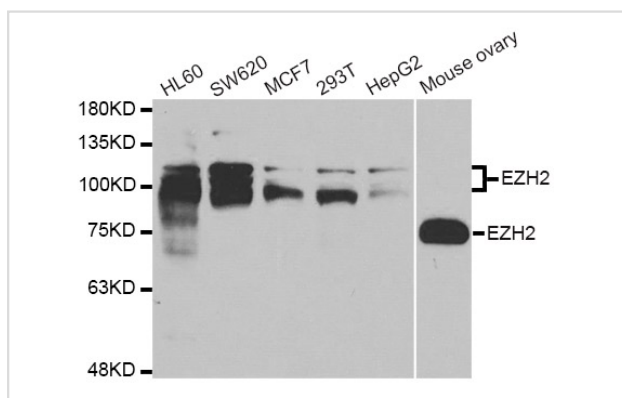
## Application Details

Western blotting: 1:500 - 1:2000

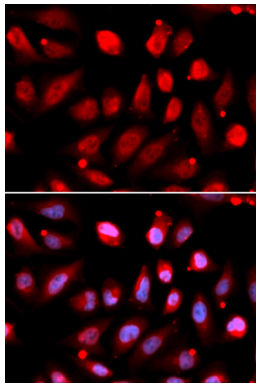
Immunohistochemistry: 1:50 - 1:200

Immunofluorescence: 1:20 - 1:100

## Images



Western blot analysis of extracts of various cell lines, using EZH2 antibody.



Immunofluorescence analysis of U2OS cell using EZH2 antibody. Blue: DAPI for nuclear staining.

## Background

This gene encodes a member of the Polycomb-group (PcG) family. PcG family members form multimeric protein complexes, which are involved in maintaining the transcriptional repressive state of genes over successive cell generations. This protein associates with the embryonic ectoderm development protein, the VAV1 oncoprotein, and the X-linked nuclear protein. This protein may play a role in the hematopoietic and central nervous systems. Multiple alternatively spliced transcript variants encoding distinct isoforms have been identified for this gene.

Note: This product is for in vitro research use only and is not intended for use in humans or animals.