

## CRX Antibody

Catalog No: #32991

Orders: [order@signalwayantibody.com](mailto:order@signalwayantibody.com)Support: [tech@signalwayantibody.com](mailto:tech@signalwayantibody.com)

## Description

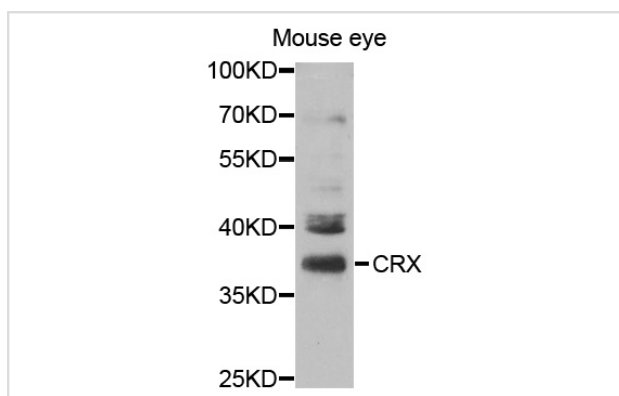
Product Name	CRX Antibody
Host Species	Rabbit
Clonality	Polyclonal
Purification	Antibodies were purified by affinity purification using immunogen.
Applications	WB IHC
Species Reactivity	Hu Ms Rt
Specificity	The antibody detects endogenous level of total CRX protein.
Immunogen Type	Recombinant Protein
Immunogen Description	Recombinant protein of human CRX.
Target Name	CRX
Other Names	CRD; LCA7; OTX3; CORD2;
Accession No.	Swiss-Prot:O43186NCBI Gene ID:1406
SDS-PAGE MW	32KD
Concentration	1.0mg/ml
Formulation	Supplied at 1.0mg/mL in phosphate buffered saline (without Mg <sup>2+</sup> and Ca <sup>2+</sup> ), pH 7.4, 150mM NaCl, 0.02% sodium azide and 50% glycerol.
Storage	Store at -20°C

## Application Details

Western blotting: 1:500 - 1:2000

Immunohistochemistry: 1:50 - 1:200

## Images



Western blot analysis of extracts of Mouse eye cell line, using CRX antibody.

## Background

The protein encoded by this gene is a photoreceptor-specific transcription factor which plays a role in the differentiation of photoreceptor cells. This homeodomain protein is necessary for the maintenance of normal cone and rod function. Mutations in this gene are associated with photoreceptor

degeneration, Leber congenital amaurosis type III and the autosomal dominant cone-rod dystrophy 2. Several alternatively spliced transcript variants of this gene have been described, but the full-length nature of some variants has not been determined.

---

Note: This product is for in vitro research use only and is not intended for use in humans or animals.