

MME Antibody

Catalog No: #32959

Orders: order@signalwayantibody.comSupport: tech@signalwayantibody.com

Description

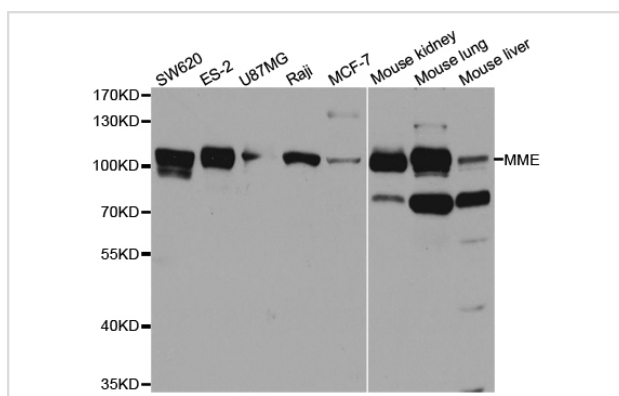
Product Name	MME Antibody
Host Species	Rabbit
Clonality	Polyclonal
Purification	Antibodies were purified by affinity purification using immunogen.
Applications	WB IHC
Species Reactivity	Hu Ms Rt
Specificity	The antibody detects endogenous level of total MME protein.
Immunogen Type	Recombinant Protein
Immunogen Description	Recombinant protein of human MME.
Target Name	MME
Other Names	NEP; SFE; CD10; CALLA;
Accession No.	Swiss-Prot:P08473NCBI Gene ID:4311
SDS-PAGE MW	85KD
Concentration	1.0mg/ml
Formulation	Supplied at 1.0mg/mL in phosphate buffered saline (without Mg ²⁺ and Ca ²⁺), pH 7.4, 150mM NaCl, 0.02% sodium azide and 50% glycerol.
Storage	Store at -20°C

Application Details

Western blotting: 1:500 - 1:2000

Immunohistochemistry: 1:50 - 1:200

Images



Western blot analysis of extracts of various cell lines, using MME antibody.

Background

This gene encodes a common acute lymphocytic leukemia antigen that is an important cell surface marker in the diagnosis of human acute lymphocytic leukemia (ALL). This protein is present on leukemic cells of pre-B phenotype, which represent 85% of cases of ALL. This protein is not

restricted to leukemic cells, however, and is found on a variety of normal tissues. It is a glycoprotein that is particularly abundant in kidney, where it is present on the brush border of proximal tubules and on glomerular epithelium. The protein is a neutral endopeptidase that cleaves peptides at the amino side of hydrophobic residues and inactivates several peptide hormones including glucagon, enkephalins, substance P, neurotensin, oxytocin, and bradykinin. This gene, which encodes a 100-kD type II transmembrane glycoprotein, exists in a single copy of greater than 45 kb. The 5' untranslated region of this gene is alternatively spliced, resulting in four separate mRNA transcripts. The coding region is not affected by alternative splicing.

Note: This product is for in vitro research use only and is not intended for use in humans or animals.