

CREM Antibody

Catalog No: #32929

Orders: order@signalwayantibody.com

Support: tech@signalwayantibody.com

Description

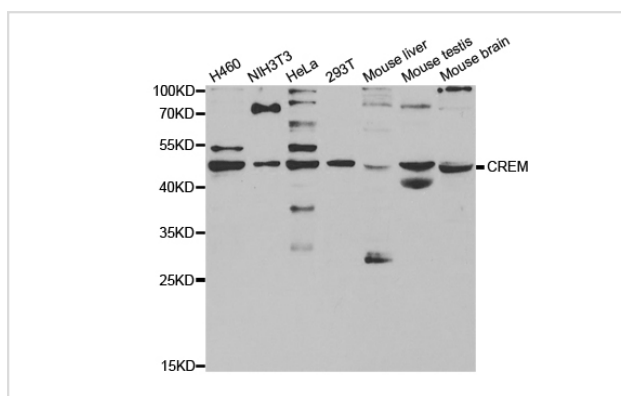
Product Name	CREM Antibody
Host Species	Rabbit
Clonality	Polyclonal
Purification	Antibodies were purified by affinity purification using immunogen.
Applications	WB IHC
Species Reactivity	Hu
Specificity	The antibody detects endogenous level of total CREM protein.
Immunogen Type	Recombinant Protein
Immunogen Description	Recombinant protein of human CREM.
Target Name	CREM
Other Names	ICER; CREM-2; hCREM-2; RP11-324I22.3;
Accession No.	Swiss-Prot:Q03060NCBI Gene ID:1390
SDS-PAGE MW	38KD
Concentration	1.0mg/ml
Formulation	Supplied at 1.0mg/mL in phosphate buffered saline (without Mg ²⁺ and Ca ²⁺), pH 7.4, 150mM NaCl, 0.02% sodium azide and 50% glycerol.
Storage	Store at -20°C

Application Details

Western blotting: 1:500 - 1:2000

Immunohistochemistry: 1:50 - 1:200

Images



Western blot analysis of extracts of various cell lines, using CREM antibody.

Background

This gene encodes a bZIP transcription factor that binds to the cAMP responsive element found in many viral and cellular promoters. It is an important component of cAMP-mediated signal transduction during the spermatogenic cycle, as well as other complex processes. Alternative promoter and

translation initiation site usage allows this gene to exert spatial and temporal specificity to cAMP responsiveness. Multiple alternatively spliced transcript variants encoding several different isoforms have been found for this gene, with some of them functioning as activators and some as repressors of transcription.

Note: This product is for in vitro research use only and is not intended for use in humans or animals.