

## HPX Antibody

Catalog No: #32919

Orders: [order@signalwayantibody.com](mailto:order@signalwayantibody.com)Support: [tech@signalwayantibody.com](mailto:tech@signalwayantibody.com)

## Description

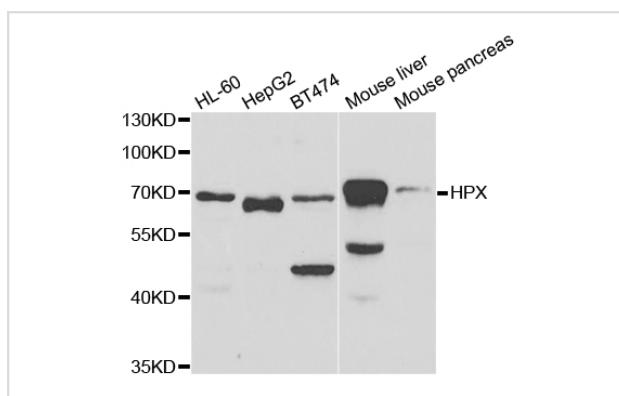
Product Name	HPX Antibody
Host Species	Rabbit
Clonality	Polyclonal
Purification	Antibodies were purified by affinity purification using immunogen.
Applications	WB IHC
Species Reactivity	Hu
Specificity	The antibody detects endogenous level of total HPX protein.
Immunogen Type	Recombinant Protein
Immunogen Description	Recombinant protein of human HPX.
Target Name	HPX
Other Names	HX;
Accession No.	Swiss-Prot:P02790NCBI Gene ID:3263
SDS-PAGE MW	51KD
Concentration	1.0mg/ml
Formulation	Supplied at 1.0mg/mL in phosphate buffered saline (without Mg <sup>2+</sup> and Ca <sup>2+</sup> ), pH 7.4, 150mM NaCl, 0.02% sodium azide and 50% glycerol.
Storage	Store at -20°C

## Application Details

Western blotting: 1:500 - 1:2000

Immunohistochemistry: 1:50 - 1:200

## Images



Western blot analysis of extracts of various cell lines, using HPX antibody.

## Background

This gene encodes a plasma glycoprotein that binds heme with high affinity. The encoded protein is an acute phase protein that transports heme from the plasma to the liver and may be involved in protecting cells from oxidative stress.

---

Note: This product is for in vitro research use only and is not intended for use in humans or animals.