

CPE Antibody

Catalog No: #32861

Orders: order@signalwayantibody.comSupport: tech@signalwayantibody.com

Description

Product Name	CPE Antibody
Host Species	Rabbit
Clonality	Polyclonal
Purification	Antibodies were purified by affinity purification using immunogen.
Applications	WB IHC IF
Species Reactivity	Hu Ms Rt
Specificity	The antibody detects endogenous level of total CPE protein.
Immunogen Type	Recombinant Protein
Immunogen Description	Recombinant protein of human CPE.
Target Name	CPE
Other Names	CarboxypeptidaseE; CarboxypeptidaseH; CPE; CPH; Enkephalinconvertase
Accession No.	Swiss-Prot:P16870NCBI Gene ID:1363
SDS-PAGE MW	53KD
Concentration	1.0mg/ml
Formulation	Supplied at 1.0mg/mL in phosphate buffered saline (without Mg ²⁺ and Ca ²⁺), pH 7.4, 150mM NaCl, 0.02% sodium azide and 50% glycerol.
Storage	Store at -20°C

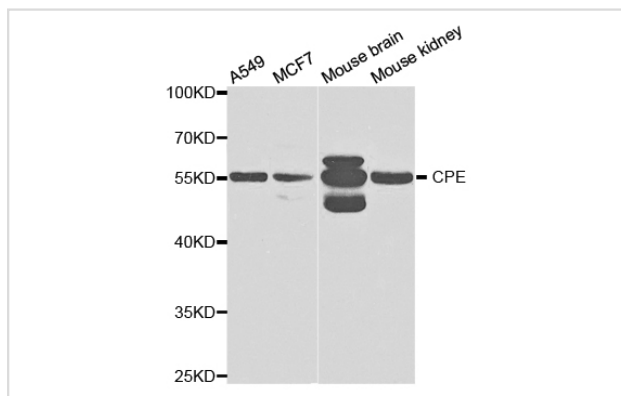
Application Details

Western blotting: 1:500 - 1:2000

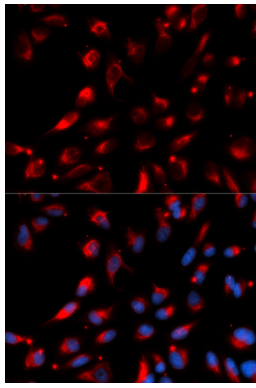
Immunohistochemistry: 1:50 - 1:200

Immunofluorescence: 1:50 - 1:200

Images



Western blot analysis of extracts of various cell lines, using CPE antibody.



Immunofluorescence analysis of U2OS cell using CPE antibody. Blue: DAPI for nuclear staining.

Background

This gene encodes a carboxypeptidase that cleaves C-terminal amino acid residues and is involved in the biosynthesis of peptide hormones and neurotransmitters, including insulin. It is a peripheral membrane protein. The protein specifically binds regulated secretory pathway proteins, including prohormones, but not constitutively secreted proteins. Mutations in this gene are implicated in type II diabetes.

Note: This product is for in vitro research use only and is not intended for use in humans or animals.