

# APTX Antibody

Catalog No: #32804

Orders: [order@signalwayantibody.com](mailto:order@signalwayantibody.com)Support: [tech@signalwayantibody.com](mailto:tech@signalwayantibody.com)

## Description

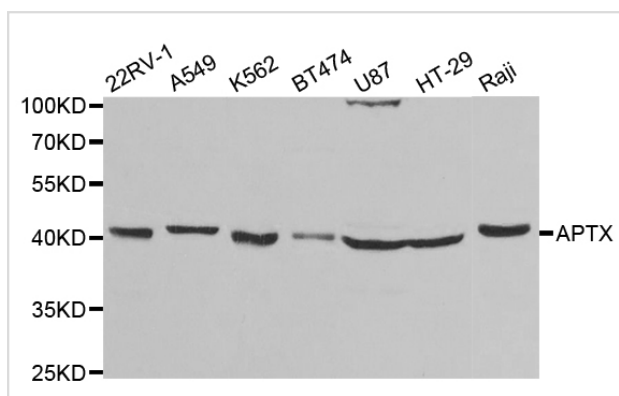
Product Name	APTX Antibody
Host Species	Rabbit
Clonality	Polyclonal
Purification	Antibodies were purified by affinity purification using immunogen.
Applications	WB IHC
Species Reactivity	Hu Ms Rt
Specificity	The antibody detects endogenous level of total APTX protein.
Immunogen Type	Recombinant Protein
Immunogen Description	Recombinant protein of human APTX.
Target Name	APTX
Other Names	AOA; AOA1; AXA1; EAOH; EOAHA
Accession No.	Swiss-Prot:Q7Z2E3NCBI Gene ID:54840
SDS-PAGE MW	41KD
Concentration	1.0mg/ml
Formulation	Supplied at 1.0mg/mL in phosphate buffered saline (without Mg <sup>2+</sup> and Ca <sup>2+</sup> ), pH 7.4, 150mM NaCl, 0.02% sodium azide and 50% glycerol.
Storage	Store at -20°C

## Application Details

Western blotting: 1:500 - 1:2000

Immunohistochemistry: 1:50 - 1:200

## Images



Western blot analysis of extracts of various cell lines, using APTX antibody.

## Background

This gene encodes a member of the histidine triad (HIT) superfamily. The encoded protein may play a role in single-stranded DNA repair through its nucleotide-binding activity and its diadenosine polyphosphate hydrolase activity. Mutations in this gene have been associated with ataxia-ocular

apraxia. Alternatively spliced transcript variants have been identified for this gene.

---

Note: This product is for in vitro research use only and is not intended for use in humans or animals.