

MOG Antibody

Catalog No: #32793

Orders: order@signalwayantibody.comSupport: tech@signalwayantibody.com

Description

Product Name	MOG Antibody
Host Species	Rabbit
Clonality	Polyclonal
Purification	Antibodies were purified by affinity purification using immunogen.
Applications	WB IHC IF
Species Reactivity	Hu Ms Rt
Specificity	The antibody detects endogenous level of total MOG protein.
Immunogen Type	Recombinant Protein
Immunogen Description	Recombinant protein of human MOG.
Target Name	MOG
Other Names	MOGIG2; NRCLP7;
Accession No.	Swiss-Prot:Q16653NCBI Gene ID:4340
SDS-PAGE MW	28KD
Concentration	1.0mg/ml
Formulation	Supplied at 1.0mg/mL in phosphate buffered saline (without Mg ²⁺ and Ca ²⁺), pH 7.4, 150mM NaCl, 0.02% sodium azide and 50% glycerol.
Storage	Store at -20°C

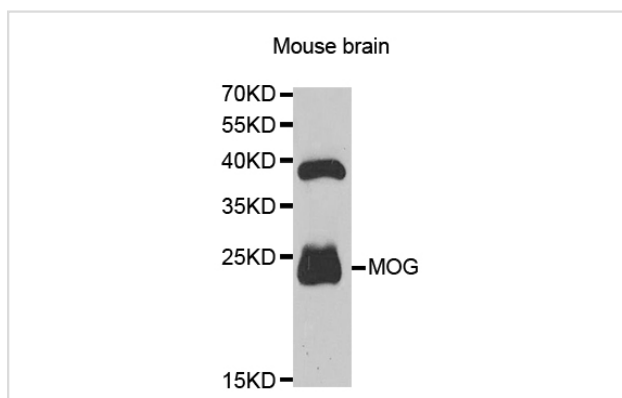
Application Details

Western blotting: 1:500 - 1:2000

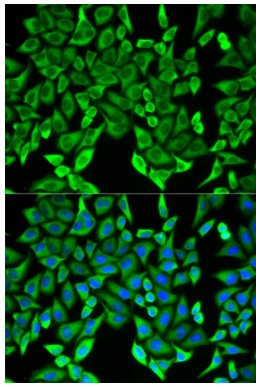
Immunohistochemistry: 1:50 - 1:200

Immunofluorescence: 1:50 - 1:200

Images



Western blot analysis of extracts of mouse brain, using MOG antibody.



Immunofluorescence analysis of HeLa cell using MOG antibody. Blue: DAPI for nuclear staining.

Background

The product of this gene is a membrane protein expressed on the oligodendrocyte cell surface and the outermost surface of myelin sheaths. Due to this localization, it is a primary target antigen involved in immune-mediated demyelination. This protein may be involved in completion and maintenance of the myelin sheath and in cell-cell communication. Alternatively spliced transcript variants encoding different isoforms have been identified.

Note: This product is for in vitro research use only and is not intended for use in humans or animals.