

GHRH Antibody

Catalog No: #32784

Orders: order@signalwayantibody.comSupport: tech@signalwayantibody.com

Description

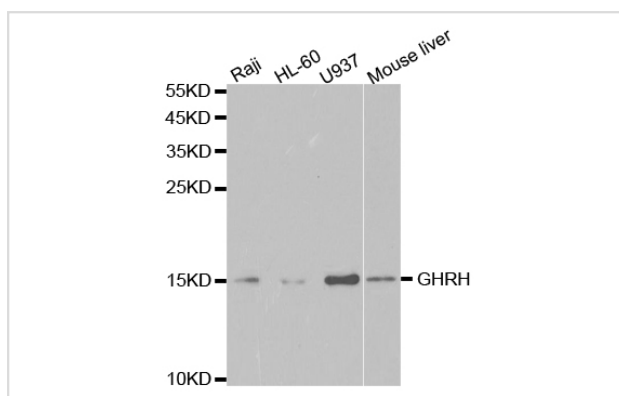
Product Name	GHRH Antibody
Host Species	Rabbit
Clonality	Polyclonal
Purification	Antibodies were purified by affinity purification using immunogen.
Applications	WB IHC
Species Reactivity	Hu Ms Rt
Specificity	The antibody detects endogenous level of total GHRH protein.
Immunogen Type	Recombinant Protein
Immunogen Description	Recombinant protein of human GHRH.
Target Name	GHRH
Other Names	GRF; INN; GHRF;
Accession No.	Swiss-Prot:P01286NCBI Gene ID:2691
SDS-PAGE MW	12KD
Concentration	1.0mg/ml
Formulation	Supplied at 1.0mg/mL in phosphate buffered saline (without Mg ²⁺ and Ca ²⁺), pH 7.4, 150mM NaCl, 0.02% sodium azide and 50% glycerol.
Storage	Store at -20°C

Application Details

Western blotting: 1:500 - 1:2000

Immunohistochemistry: 1:50 - 1:200

Images



Western blot analysis of extracts of various cell lines, using RAD51 antibody.

Background

The protein encoded by this gene belongs to the glucagon family and is a preproprotein that is produced in the hypothalamus. The preproprotein is cleaved to form a 44 aa factor, also called somatocinin, that acts to stimulate growth hormone release from the pituitary. Variant receptors for

somatocrinin have been found in several types of tumors, and antagonists of these receptors can inhibit the growth of the tumors. Defects in this gene are a cause of dwarfism, while hypersecretion of the encoded protein is a cause of gigantism.

Note: This product is for in vitro research use only and is not intended for use in humans or animals.