

BPI Antibody

Catalog No: #32782

Orders: order@signalwayantibody.comSupport: tech@signalwayantibody.com

Description

Product Name	BPI Antibody
Host Species	Rabbit
Clonality	Polyclonal
Purification	Antibodies were purified by affinity purification using immunogen.
Applications	WB IHC IF
Species Reactivity	Hu Ms
Specificity	The antibody detects endogenous level of total BPI protein.
Immunogen Type	Recombinant Protein
Immunogen Description	Recombinant protein of human BPI.
Target Name	BPI
Other Names	rBPI; BPIFD1;
Accession No.	Swiss-Prot:P17213NCBI Gene ID:671
SDS-PAGE MW	54KD
Concentration	1.0mg/ml
Formulation	Supplied at 1.0mg/mL in phosphate buffered saline (without Mg ²⁺ and Ca ²⁺), pH 7.4, 150mM NaCl, 0.02% sodium azide and 50% glycerol.
Storage	Store at -20°C

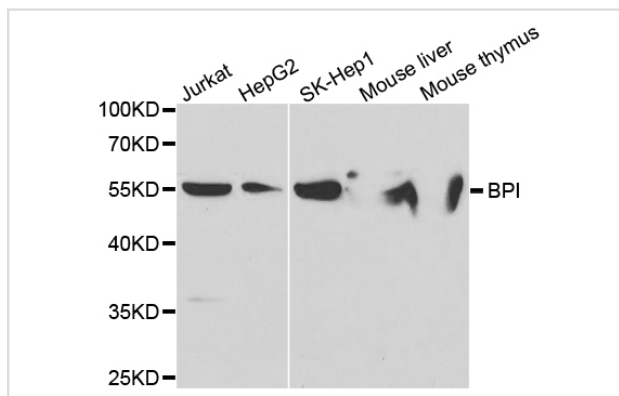
Application Details

Western blotting: 1:500 - 1:2000

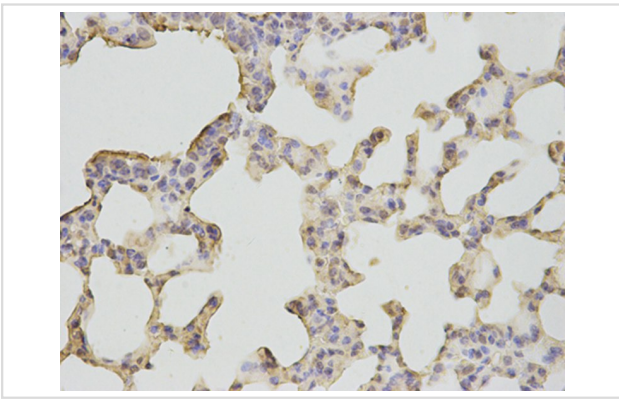
Immunohistochemistry: 1:50 - 1:200

Immunofluorescence: 1:50 - 1:200

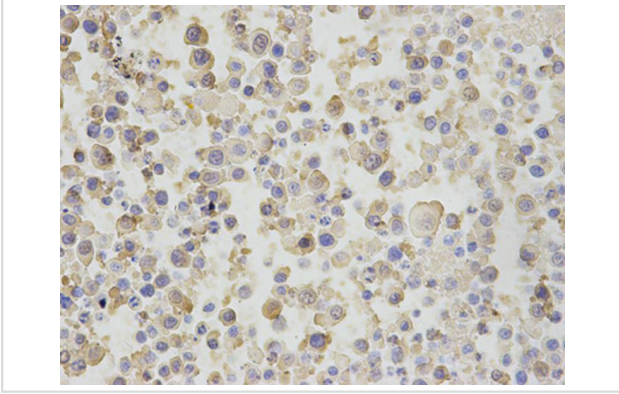
Images



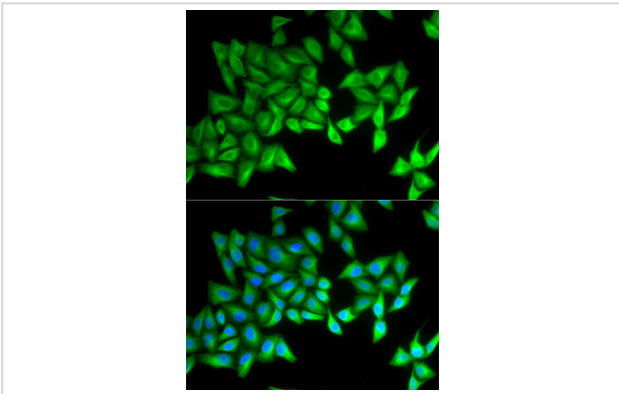
Western blot analysis of extracts of various cell lines, using BPI antibody.



Immunohistochemical analysis of paraffin-embedded mouse lung using BPI antibody at dilution of 1:200 (400x lens).



Immunohistochemical analysis of paraffin-embedded mouse liver cancer using BPI antibody at dilution of 1:200 (400x lens).



Immunofluorescence analysis of A549 cell using BPI antibody. Blue: DAPI for nuclear staining.

Background

This gene encodes a lipopolysaccharide binding protein. It is associated with human neutrophil granules and has bactericidal activity on gram-negative organisms.

Note: This product is for in vitro research use only and is not intended for use in humans or animals.